

Facts about Social Welfare and Health Care in Finland

2006



TO THE READER	3
GENERAL FACTS ABOUT FINLAND	4
1 POPULATION	
Population by age	8
Vital statistics.....	8
2 SERVICES FOR CHILDREN AND FAMILIES	
Child day care	11
Child allowance	12
Child welfare.....	12
Maintenance and custody of children	13
Other services for children and families	13
3 CARE AND SERVICES FOR OLDER PEOPLE	
Institutional care and housing services	14
Home-help services.....	15
4 SERVICES FOR PEOPLE WITH DISABILITIES	
Services under the Services and Support for the Disabled Act	17
Services for people with intellectual disabilities	17
Other services	18
5 ALCOHOL AND DRUGS	
Substance use	19
Services for substance abusers.....	21
Costs from alcohol and drugs	22
6 HEALTH CARE	
Health centres.....	23
Private health care	24
Periods of care and average length of stay in inpatient health care.....	24
Treatment of mental disorders	25
Legally induced abortions	26
Sterilisations	26
7 PRIVATE SOCIAL AND HEALTH SERVICES	
Private providers of social services.....	28
Private providers of health services.....	28
8 SOCIAL ASSISTANCE	30
9 PERSONNEL	
Municipal employees by activity	31
Municipal employees by occupational group	32
10 EXPENDITURE	
Social protection expenditure by function.	34
Financing of social expenditure.....	34
Per capita social expenditure in EU and Nordic countries	34
Health expenditure by function.....	35
Financing of health expenditure.....	36
Per capita health expenditure in OECD countries	36
Further information.....	38

TO THE READER

'Facts about Social Welfare and Health Care in Finland'¹ 2006¹ provides information on social welfare services, alcohol and drugs, health-care services, social assistance, personnel and expenditure. In each section, some key indicators have been picked out and highlighted in pink. The data mostly comes from STAKES' statistics, registers and studies, but also from the databases of Statistics Finland and the Social Insurance Institution, for instance. In addition, international information has been obtained from NOSOSCO, NOMECSO, OECD and Eurostat

The STAKES Information Division maintains and develops national statistics and registers on social welfare and health care, and processes, adapts and delivers information for the use of various actors. More detailed statistical information on social and health care can be obtained from 'Statistical Yearbook on Social Welfare and Health Care', the SOTKANet Indicator Bank (www.sotkanet.fi) and the Finnish Care Register database HILMO (<http://info.stakes.fi/nettihilmo>).

STAKES

Research and Development Centre for Welfare and Health

Phone +358 9 3967 2653, Fax +358 9 3967 2450

Internet: <http://www.stakes.fi>

P.O. Box 220, FIN-00531 Helsinki

Explanation of symbols:

- (-) Magnitude nil
- (..) Data unavailable or too uncertain to be presented
- (.) Data illogical for presentation
- (b) Break in series
- (e) Projection
- (*) Preliminary data

¹Appeared previously under the title 'Facts about Finnish Social Welfare and Health Care'.

Finland

Population: 5.3 million

Capital: Helsinki
(560 900 inhabitants,
the metropolitan area
about one million)

Official languages:
Finnish (91.6%)
Swedish (5.5%)

Currency unit: Euro

Total area¹ 390 920 km²

Land boundary¹
With Sweden 614 km
With Norway 736 km
With Russia 1 340 km
Boundary of territorial
waters 1 250 km

**Population per km²
of land area 2005** 17.3

**Population in urban areas
2004, %** 62.5



Weather conditions²

	Helsinki	Sodankylä (Lapland)
Mean temperature in 2006		
February	- 7.9 C°	- 15.2 C°
July	18.9 C°	14.5 C°
Mean temperature in 1971–2000	5.6 C°	- 0.8 C°
Number of days with precipitation in 2005	93	117

Municipalities by number of inhabitants 2005
(31 Dec)³

0–1 999	80
2 000–3 999	108
4 000–9 999	142
10 000–19 999	49
20 000–99 999	46
100 000–	6
Total	431

Population aged 15 and over with an
educational qualification 2004 (31 Dec)

Total	2 709 548
Tertiary education, %	25.0
Upper secondary education, %	37.7

Rate of taxation 2005, % of GDP 43.9

Unemployment 2005

Unemployed, total	220 000
Unemployment rate, %	8.4
Males	8.2
Females	8.6
Population aged 15–24	20.1

Women's labour force participation 2005,
% of population aged 15–64 72.8

Sources: ¹ National Land Survey of Finland

² Finnish Meteorological Institute

³ Association of Finnish Local and Regional Authorities

If not otherwise indicated, the source of data is Statistics Finland



Social protection in Finland

The constitution of Finland guarantees the basic economic, social and educational rights of all people living in the country.

Social protection is made up of preventive social and health care, social welfare and health services, and sickness, unemployment, old age and other benefits.

Social protection aims to safeguard the working and living environment of the population, and ensure good standards of health and work ability, sufficient income, services, and social security, at different stages of life. Practically every household at some point receives some form of income transfer or uses social and health services.

The Finnish social protection system is structured in line with the principles of the Nordic welfare model. The main features of the Nordic welfare state are:

- the principle of universality (the right of all to social protection regardless of where they live, their profession or economic position)
- a strong public sector
- tax funding based on the legislative rights of citizens/residents
- equal treatment
- a relatively high level of benefits

The public sector plays a central role in the development of social protection. Services and income protection are guided by legislation. Services are mainly funded by taxation. Income protection expenditure is covered by payments collected from employers, insurance contributions, and state funds.

Social spending and funding

Social spending mainly consists of expenditure on social welfare and health services, pensions, sickness, and unemployment.

Finland's social spending as a proportion of GDP is below the EU average. If Finnish purchasing power adjustments are taken into account, its social spending is among the lowest in the EU countries. In 2004, it stood at 26.7 per cent of GDP or EUR 40.6 billion.

Funding for basic services is mainly provided by the municipalities. They play a key role in providing social and health services, and they cover about 65 per cent of the costs of service provision. State subsidies account for a fourth of these costs, and client payments cover the remaining 10 per cent.

1 Population

Population by age

	1995	2004	2005	2005	2010e
	Males				
0–6	454 940	398 826	400 107	204 615	405 114
7–14	516 830	515 734	506 797	258 202	466 413
15–24	632 169	651 469	654 878	334 828	652 975
25–49	1 952 541	1 756 713	1 744 795	887 779	1 700 431
50–64	827 929	1 082 929	1 107 838	550 158	1 160 889
65–74	432 277	450 525	448 198	204 190	506 711
75–84	233 122	297 340	304 378	110 922	313 242
85–	67 018	83 075	88 589	21 656	103 881
Total population	5 116 826	5 236 611	5 255 580	2 572 350	5 309 656
Males, %	48.7	48.9	48.9	.	49.1
Population in urban areas, %	58.2	62.3	62.9	61.8	63.4

Source: Statistics Finland

Population by age, %

	1995	2004	2005	2005	2010e
	Males				
0–6	8.9	7.6	7.6	8.0	7.6
7–64	76.8	76.5	76.4	79.0	75.0
65–	14.3	15.9	16.0	13.1	17.4
75–	5.9	7.3	7.5	5.2	7.9

Source: Statistics Finland

Vital statistics

	1987	1995	2000	2004	2005
Births	60 070	63 125	56 771	57 759	57 822
Live births	59 743	62 823	56 542	57 569	57 636
/1000, mean population	12.1	12.3	10.9	11.0	11.0
Stillbirths	327	302	229	190	186
/1000 births	5.4	4.8	4.0	3.3	3.2
Perinatal deaths	522	437	328	302	288
/1000 births	8.8	6.9	5.8	5.2	5.0
Infant deaths	355	245	206	195	167
/1000 live births	5.9	3.9	3.6	3.4	2.9

	1987	2002	2003	2004	2005
Deaths	47 988	49 389	49 033	47 600	47 928
/1000, mean population	9.7	9.5	9.4	9.1	9.1
Males	24 290	23 985	23 935	23 802	24 057
Females	23 698	25 404	25 098	23 798	23 871
Immigrants	9 142	18 113	17 838	20 333	21 355
Emigrants	8 475	12 891	12 083	13 656	12 369
Net immigration	667	5 222	5 755	6 677	8 986
/1000, mean population	0.1	1.0	1.1	1.3	1.7
Population growth	12 545	11 359	13 437	15 158	18 969
/1000, mean population	2.5	2.2	2.6	2.9	3.6
General fertility rate	47.6	46.3	47.5	48.7	49.0
Total fertility rate	1.59	1.72	1.76	1.80	1.80

Sources: Statistics Finland. STAKES

Parturients

	1987	1995	2000	2004	2005
Average age, years	28.9	29.7	29.9	30.0	30.0
Under-20s, %	3.2	2.5	2.9	2.9	2.8
Over-35s, %	13.3	15.1	18.4	19.4	19.0
Primiparas, %	39.8	39.1	40.9	42.3	42.1
Married or co-habiting, %	92.8	89.9	88.1	93.7	93.2
Has smoked during pregnancy, %	15.0	14.7	14.4	15.0	14.6

Newborns

	1987	1995	2000	2004	2005
Average weight, g	3 548	3 539	3 515	3 512	3 505
Average length, cm	50.2	50.2	50.1	50.1	50.0
Premature birth (< 37 weeks), %	5.6	5.7	6.3	5.8	5.7
Low birth weight (< 2500 g), %	3.9	4.3	4.6	4.4	4.3
Twins or triplets, %	2.2	2.9	3.2	3.0	3.0
Discharged within 7 days, %	75.9	91.8	92.3	92.3	92.2

Maternal deaths

	1986–1990	1991–1995	1996–2000	2001–2005
Maternal deaths	20	16	13	18
/100 000 live births	6.4	5.0	4.5	6.3

Source: Statistics Finland

Life expectancy

	1990		2004		2005	
	Males	Females	Males	Females	Males	Females
At age 0	70.7	78.8	75.3	82.3	75.5	82.3
At age 55	20.6	26.2	24.1	29.2	24.3	29.4

Source: Statistics Finland

Causes of death

	1990		2004		2005	
	Deaths	/100 000 inhabitants	Deaths	/100 000 inhabitants	Deaths	/100 000 inhabitants
Diseases of the circulatory system	23 988	499.5	19 642	307.7	19 649	299.1
Neoplasms	10 086	204.9	10 768	172.3	10 856	169.5
Diseases of the respiratory system	3 750	79.8	2 971	46.6	2 467	37.7
Diseases of the digestive system	1 317	27.6	1 357	21.2	1 377	21.1
Alcohol-related diseases	1 161	22.5	1 860	30.3	2 008	32.5
Accidental injuries and violence	4 351	87.6	3 872	67.5	3 752	63.6
- of which accidental injuries	2 483	50.6	2 584	43.7	2 558	42.1
- of which suicides	1 520	30.0	1 064	19.7	994	17.9
Total	50 091	1 036.8	47 757	761.5	47 751	741.5

Source: Statistics Finland

2 Services for children and families

Child day care

	1995	2000	2004	2005
Children in day care, total 31 Dec.				
Municipal day care	189 918	200 487	185 669	186 058
Municipal day-care centres	115 583	121 676	118 728	121 826
Private outsourced day-care centres	8 854	10 181	9 283	9 253
Family day care	65 481	68 630	57 658	54 979
Private day care	..	14 058	14 851	15 368
Municipal and private day care, total	..	214 547	200 520	201 426

Children in day care, % 1–6-year-olds

Municipal day care	48.4	55.2	54.4	54.3
Municipal day-care centres	29.5	33.5	34.8	35.6
Private outsourced day-care centres	2.3	2.8	2.7	2.7
Family day care	16.7	18.9	16.9	16.1
Private day care	..	3.9	4.4	4.5
Municipal and private day care, total	..	59.1	58.8	58.8

Preschool education

Children receiving preschool education, total	..	59 479	57 199	57 912
% of 6-year-olds	..	91.2	99.9	99.9
Children receiving preschool education at day-care centres	..	48 598	44 865	45 637

Supervised play groups

Average daily attendance in supervised play groups	24 388	27 287	24 970	20 609
--	--------	--------	--------	--------

Home-care allowance

	1995	2000	2004	2005
Recipient families, total 31 Dec	..	72 546	67 966	67 844
Recipient families/1000 children aged 0–2	..	424	399	3 939
Children receiving home-care allowance, 31 Dec	..	111 595	103 845	103 313
Home-care allowance paid, EUR million	..	315.3	279.8	305.7

Sources: Social Insurance Institution, Statistics Finland

Child allowance

	1995	2000	2004	2005
Children receiving child allowance, 31 Dec	1 097 449	1 063 680	1 039 967	1 034 400
Families receiving child allowance, 31 Dec	614 620	586 834	570 413	569 633
Child allowances paid, EUR million	1 474.7	1 387.1	1 428.8	1 424.4

Source: Social Insurance Institution

Child welfare

	1995	2000	2004	2005
Children and young people in community care interventions,	30 686	49 351	59 912	59 101
% of all under-18s	2.6	4.3	5.4	5.4

Children and young people placed outside the home, total	10 950	12 851	14 786	15 160
Foster care	5 336	5 774	5 577	5 504
Residential care	3 920	5 001	6 825	7 225
Other	1 694	2 076	2 384	2 431
Placements, 0–17-year-olds, % of under-18s	0.8	0.9	1.1	1.1

Children and young people in care, based on the year's last placement decision	6 384	7 314	8 732	9 162
New cases	1 198	1 658	2 132	2 404

Child maintenance and custody

	1995	2000	2004	2005
Agreements confirmed by the Social Welfare Board on				
- custody, right of access and residence of child	30 911	36 727	40 052	40 124
- maintenance payments	26 808	34 316	35 056	34 559
Children receiving maintenance payments 31.12., total				
	103 101	107 962	104 495	102 743
% of all under-18s	8.8	9.5	9.4	9.3

Maintenance allowances and recovered maintenance payments

Maintenance allowances paid, EUR 1000	119 520	139 439	141 767	139 281
Maintenance payments recovered for children, EUR 1000	15 353	9 558	9 590	8 486
Total, EUR 1000	134 873	148 997	151 357	147 767
Total EUR per child	1 308	1 380	1 448	1 438

Other services for children and families

	1995	2000	2004	2005
Families with children receiving municipal home help, total				
	29 992	18 049	13 409	12 812
% of all families with children under 18	4.7	2.9	2.3	2.2

Child guidance and family counselling

Clients during year	66 917	72 142	71 856	70 637
Children and young people as clients, total	..	30 091	31 592	30 963
% of all under-18s	..	2.7	2.9	2.8
Adults as clients, total	..	42 051	40 264	39 674

Mother-and-baby homes

Clients during year	..	540	605	637
---------------------	----	-----	-----	-----

Shelters for battered family members

Clients during year	..	3 501	3 388	3 605
---------------------	----	-------	-------	-------

Sources: Statistics Finland, STAKES

3 Care and services for older people

	1995	2000	2004	2005
Living at home, % of over-75s	..	89.8	89.7	89,6

Institutional care and housing services

Residential homes for older people

Clients, 31 Dec, total	23 088	21 325	20 052	19 488
Over-65s	22 546	20 630	19 424	18 898
% of over-65s	3.1	2.7	2.3	2.2
Over-75s	19 535	18 093	17 246	16 878
% of over-75s	6.5	5.3	4.5	4.3
Care days during year, total	8 571 760	7 856 748	7 324 477	7 135 437

Inpatient care in health centres

Long-term clients over 65, 31 Dec	12 255	12 164	11 102	11 198
% of over-65s	1.7	1.6	1.3	1.3
Care days during year, over-65s	6 375 905	6 865 167	6 550 035	6 585 039
Long-term clients over 75, 31 Dec	10 312	10 360	9 602	9 758
% of over-75-s	3.4	3.0	2.5	2.5
Care days during year, over-75s	5 216 899	5 677 595	5 481 628	5 553 675

Sheltered housing for older people

Clients, 31 Dec, total	14 661	22 189	25 897	25 949
Over-65s	13 990	21 205	24 584	24 782
% of over-65s	1.9	2.7	3.0	2.9
Sheltered housing with 24-hour assistance, %	..	32.9	55.2	63.6
Clients, 31 Dec, total	..	7 302	14 297	16 497
Over-65s	..	6 799	13 551	15 639

Home-help services

	1995	2000	2004	2005
Regular home care (home-help services and home nursing)				
Clients over 65, 30 Nov	53 293	52 353 ¹⁾	51 323 ²⁾	54 316
% of over-65s	7.3	6.6 ¹⁾	6.3 ²⁾	6.5
Households with older persons receiving home help during year				
	86 748	83 148	81 207	85 396
% of over-65s	11.8	10.7	9.8	10.2
Clients over 65 in support services during year				
	97 967	105 195	108 248	107 827
% of over-65s	13.4	13.5	13.0	12.8
Clients over 65 receiving in support for informal care during year				
	11 294	14 355	18 650	19 726
% of over-65s	1.5	1.8	2.2	2.3
Persons receiving home-help services, support services or support for informal care, % of over-65s (incl. multiple use)	26.7	26.1	25.0	25.3

Care and services for older people in the Nordic countries 2004

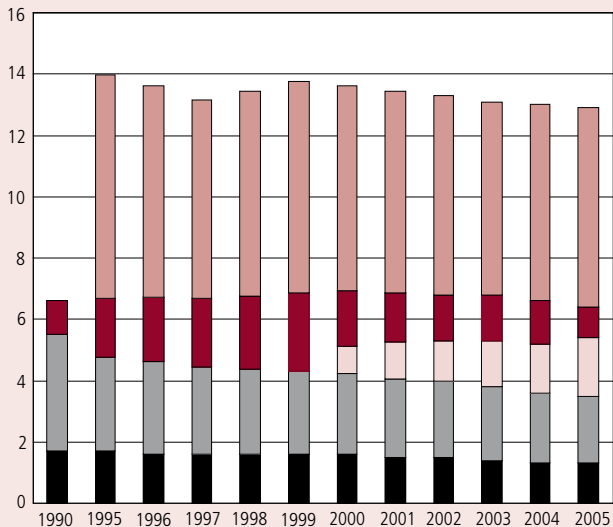
Clients, % of over-65s	Finland	Sweden	Norway	Denmark	Iceland
Institutional care and housing services	6.8	7.3	11.8	8.2	9.4
Home-help services	9.8	8.5	14.1	21.6	19.2

1) year 2001, 2) year 2003

Sources: Statistics Finland, STAKES, Nososco

Coverage of care and services for older people 1990, 1995–2005

Clients over 65, % of over-65s



- Regular home care
- Sheltered housing for older people
- Of which sheltered housing with 24-hour assistance
- Residential homes for older people
- Long-term care at health centres

4 Services for people with disabilities

Services under the Services and Support for the Disabled Act

	1995	2000	2004	2005
Service recipients during year				
Transport services for seriously disabled people	45 839	66 568	80 022	80 937
% of the population	0.9	1.3	1.5	1.5
Interpreter services	2 808	3 137	3 398	3 530
% of the population	0.05	0.06	0.06	0.07
Sheltered housing for seriously disabled people	..	1 894	2 559	2 775
% of the population	..	0.04	0.05	0.05
Housing alterations	8 012	7 857
% of the population	0.15	0.15
Personal assistance	1 835	2 817	4 029	4 321

Services for people with intellectual disabilities

	1995	2000	2004	2005
Clients 31 Dec				
Institutions for people with intellectual disabilities	3 699	2 960	2 625	2 518
Housing for people with intellectual disabilities, 24-hour assistance	..	3 344	4 694	4 868
Housing for people with intellectual disabilities, part-time assistance	..	2 476	2 655	2 646
Family care for people with intellectual disabilities	1 304	1 270	1 156	1 094
Day and sheltered work centres for people with intellectual disabilities	9 499	10 929	11 985	11 926

Sources: Statistics Finland, STAKES

Other services

	1995	2000	2004	2005
Sheltered work centres for people with disabilities				
Clients 31 Dec	3 151	3 301	3 156	3 018
Households with disabled persons receiving home help during year				
	6 986	6 383	5 682	5 662
Clients under 65 receiving support for informal care				



5 Alcohol and drugs

Substance use

	1990	2003	2004	2005
Consumption of alcoholic beverages, 100% alcohol per capita, litres				
Total consumption	8.9	9.4	10.3	10.5
Undocumented consumption	1.2	1.7	2.1	2.3
Documented consumption	7.7	7.7	8.2	8.2
Of which (litres):				
Spirits	7.7	5.5	6.4	6.6
Wines	6.2	10.6	10.6	10.9
Cider	0.3	10.4	10.0	10.1
Long drinks	3.7	5.0	4.8	4.8
Beer	81.6	78.1	81.8	82.5

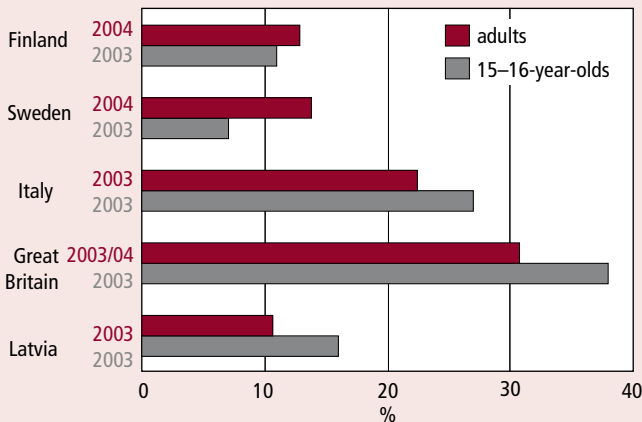
Real price indices for documented consumption of alcoholic beverages, 2000=100

Total	98	102	93	91
Spirits	106	98	79	77
Wines	101	100	96	96
Beer	107	103	96	96

Intoxicated at least once a month, %	1995	2001	2003	2005
14–18-year-olds	17	22	22	20
	1992	2003	2004	2005
15–69-year-olds	17	11	11	9
Males	27	16	15	14
Females	8	5	7	5

Sources: Nuorten terveystapatutkimus, Juomapatutkimus 1992 ja 2000, Päihdekysely 2003, 2004 ja 2005

Experimental or habitual use of cannabis in selected EU countries



Source: EMCDDA, ESPAD

Experimental or habitual use of cannabis, %

		Age group			Total
		15-24	25-34	35-69	
Males	1992	17	11	3	6
	2004	22	27	9	14
Females	1992	7	9	2	4
	2004	20	18	5	10

Sources: Päihdekyseily 2004

Estimated population shares of amphetamine and opiate users, 2002, %

	Helsinki metropolitan area	Whole country
Amphetamine users	0.6-1.0	0.4-0.7
Opiate users	0.3-0.6	approx. 0.2

Sources: Partanen P. et al. 2004, STAKES

Services for substance abuser

	1997	2003	2004	2005
Clients during year				
A-clinics	39 166	41 707	42 973	42 783
/1000 inhabitants	7.6	8.0	8.2	8.0
Youth clinics	3 702	5 428	5 271	5 939
/1000 inhabitants	0.7	1.0	1.0	1.0
Housing service units	4 066	3 960	3 719	3 805
/1000 inhabitants	0.8	0.8	0.7	1.0
Overnight shelters	1 311	1 421	1 386	1 291
/1000 inhabitants	0.3	0.3	0.3	0.0
Periods of care during year				
Detoxification and rehabilitation centres	21 229	22 154	22 529	22 389
/1000 inhabitants	4.1	4.2	4.3	4.0
Alcohol-related hospital care	33 889	32 892	36 483	37 338
/1000 inhabitants	6.6	6.3	7.0	7.1
Drugs-related hospital care	7 276	9 643	9 628	8 726
/1000 inhabitants	1.4	1.8	1.8	2.0

Year 2005	A-clinics, Detoxification and		Hospital		
	youth clinics	rehabilitation centres	inpatient wards		
	Clients	Periods of care	Periods of care, primary diagnosis		
%			alcohol	drug	medicine and the like
Males	67.9	74.8	79.6	64.4	49.5
Females	32.1	25.2	20.4	35.6	50.5
-19	6.4	2.9	2.2	7.9	11.3
20-29	18.2	15.5	3.8	51.8	23.5
30-39	18.2	20.4	11.2	20.3	19.0
40-49	25.3	30.9	26.9	11.0	21.1
50-59	23.2	24.1	34.9	5.4	12.9
65-	8.6	6.2	21.0	3.6	12.3
Total	48 722	22 389	26 677	1 153	4 746
of which 25-64-year-olds/1000 persons in the same age group	9.6	6.8	7.8	0.2	1.1

Sources: STAKES, A-Clinic Foundation

Primary reason for seeking drug treatment among clients in services for substance abusers

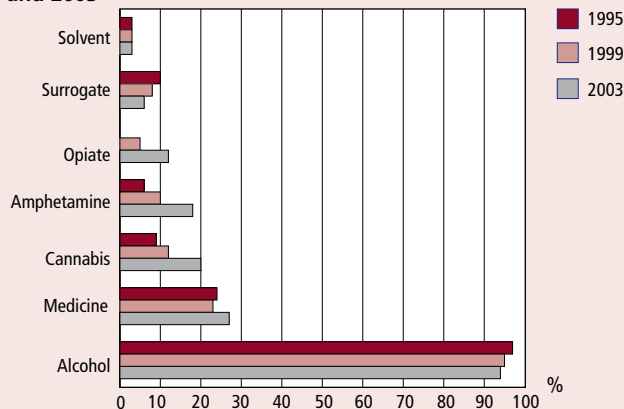
	1998	2001	2002	2003	2004	2005
%						
Opiates	21	28	28	31	34	37
Stimulants	35	26	28	28	26	22
Cannabis	17	20	18	16	15	14
Hypnotics, sedatives	5	6	5	6	6	7
Alcohol (mixed use)	19	19	20	19	18	19

Costs from alcohol and drugs

Costs of the harm done by alcohol and drugs by main category, 2004, EUR million

	Alcohol	Drugs and medicine abuse
Direct costs	748	232
Health costs	192	48
Social costs	154	66
Crime control	259	58
Damage to property, surveillance, research, substance abuse prevention	144	60
Indirect costs	4 080	585

Substance abusers in social and health services in 1995, 1999 and 2003



6 Health care

Health centres

Primary health care

	1995	2000	2004	2005
Health-care visits, total	23 759 097	25 130 483	24 951 416	25 602 399
/1000 inhabitants	4 652	4 850	4 765	4 871
Visits to prenatal clinics	1 035 447	929 709	1 011 035	1 042 009
Visits to child-health clinics	1 474 894	1 343 243	1 260 974	1 245 233
Visits to school and student health units	2 169 292	1 944 646	1 916 593	1 925 265
Visits to occupational health care	650 545	956 708	1 142 757	1 212 976
Home-nursing visits	3 391 974	3 447 083	3 536 515	3 936 669
Dental care visits, total	4 786 196	4 848 889	4 965 430	4 968 852
/1000 inhabitants	937	936	948	945

Institutional care

Periods of inpatient care	198 937	251 697	242 633	239 340
/1000 inhabitants	39	49	46	46
Care days	7 003 030	7 563 714	7 273 808	7 283 290
/1000 inhabitants	1 371	1 461	1 391	1 388

Specialised health care

	1995	2000	2004	2005
Outpatient visits, total	5 852 144	6 197 702	6 768 269	6 857 634
/1000 inhabitants	1 130	1 196	1 292	1305

Institutional care

Periods of inpatient care	1 073 603	1 098 746	1 086 160	1 095 046
/1000 inhabitants	210	212	208	209
Care days	7 973 684	6 494 956	6 115 186	6 026 927
/1000 inhabitants	1 561	1 255	1 170	1 149

Private health care

	1996	1998	2003	2004	2005
Outpatient visits, total, million	13,6	14,5	16,7	16,3	..
/1000 inhabitants	2 651	2 818	3 196	3 141	..
Periods of care	49 555	55 015	63 961	66 434	72 208
/1000 inhabitants	10	11	12	13	14
Care days, total	499 000	489 061	470 277	494 868	482 082
/1000 inhabitants	97	95	90	95	92

Periods of care and average length of stay in inpatient health care

Main diagnostic group ICD-10	Periods of care, total		Periods of care/ 1000 inhabitants		Average length of stay, days	
	1996	2005	1996	2005	1996	2005
Infectious and parasitic diseases	39 561	37 275	7.7	7.1	7.3	7.1
Neoplasms	121 296	134 307	23.7	25.6	7.8	6.4
Diseases of blood and blood-forming organs	11 543	10 830	2.3	2.1	6.6	5.6
Endocrine, nutritional and metabolic diseases	29 018	23 880	5.7	4.6	11.0	9.8
Mental disorders	92 012	90 561	18.0	17.3	51.9	40.7
Diseases of the nervous system	52 929	54 847	10.3	10.5	15.8	15.4
Diseases of the eye	43 401	56 955	8.5	10.9	2.6	1.5
Diseases of the ear	17 264	16 760	3.4	3.2	2.1	1.7
Diseases of the circulatory system	197 884	186 317	38.6	35.5	14.8	14.0
Diseases of the respiratory system	129 731	99 819	25.3	19.0	11.7	11.2
Diseases of the digestive system	97 332	98 243	19.0	18.7	5.8	4.9
Diseases of the skin and subcutaneous tissue	17 361	13 307	3.4	2.5	7.5	6.7
Diseases of the musculoskeletal system and connective tissue	117 704	123 597	23.0	23.6	6.5	5.3
Diseases of the genitourinary system	72 133	71 484	14.1	13.6	5.9	5.2
Pregnancy, childbirth and the puerperium	90 450	78 985	17.7	15.1	3.9	3.4

Main diagnostic group ICD-10	Periods of care,		Periods of care		Average	
	total		/1000 inhabitants		length of stay, days	
	1996	2005	1996	2005	1996	2005
Certain conditions originating in the perinatal period	7 339	8 847	1.4	1.7	9.7	8.6
Congenital anomalies	13 973	11 068	2.7	2.1	5.1	5.2
Symptoms, signs and ill-defined conditions not elsewhere classified	86 014	81 175	16.8	15.5	5.1	4.6
Injury and poisoning	107 602	118 440	21.0	22.6	9.4	8.4
Factors influencing health status	32 107	34 208	6.3	6.5	4.1	6.4
Total	1 377 003	1 351 257	268.7	257.6	11.5	9.9

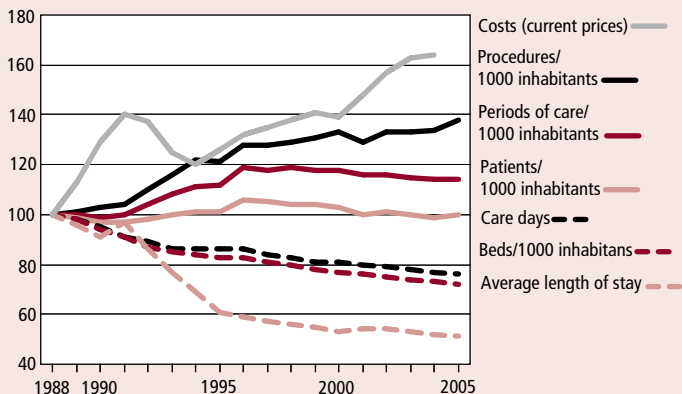
Specific disease groups

Diabetes	20 262	14 149	4.0	2.7	12.8	12.3
Ischemic heart diseases	64 092	53 520	12.5	10.2	11.5	10.8
Cerebrovascular diseases	32 738	31 462	6.4	6.0	37.2	36.8
Asthma	16 122	7 881	3.1	1.5	5.4	5.9
Schizophrenias	21 120	20 010	4.1	3.8	108.9	58.7

Treatment of mental disorders

	1995	2000	2001	2004	2005
Outpatient visits, total	1 433 678	1 636 331	1 834 598	2 117 808	2 063 469
/1000 inhabitants	281	316	353	404	393
Periods of care	68 912	82 964	81 241	76 596	73 424
/1000 inhabitants	13.5	16.0	15.7	14.7	14.0
Care days, total	2 554 096	2 282 686	2 227 687	2 171 010	2 084 889
/1000 inhabitants	500.0	441.0	429.4	415.3	397.4

Institutional health care 1988–2005, index 1988 = 100



Legally induced abortions

	1995	2002	2003	2004	2005
Abortions	9 872	10 974	10 767	11 147	10 931
/1000 females aged 15–49	7.8	9.1	9.0	9.4	9.3
Abortions among under-20s	1 766	2 592	2 407	2 456	2 323
/1000 females aged 15–19	11.0	16.1	15.2	15.7	14.9
Abortions before 12th week of gestation, %	94.0	93.2	93.4	93.0	93.0
Drug-induced abortions, %	-	33.3	40.3	44.3	53.1

Sterilisations

	1995	2002	2003	2004	2005
Sterilisations	11 313	8 319	7 547	7 269	6 923
Males	792	1 594	1 642	1 614	1 821
/1000 males aged 25–54	0.7	1.4	1.5	1.5	1.7
Females	10 521	6 725	5 905	5 655	5 102
/1000 females aged 25–54	9.4	6.2	5.5	5.3	4.8



7 Private social and health services

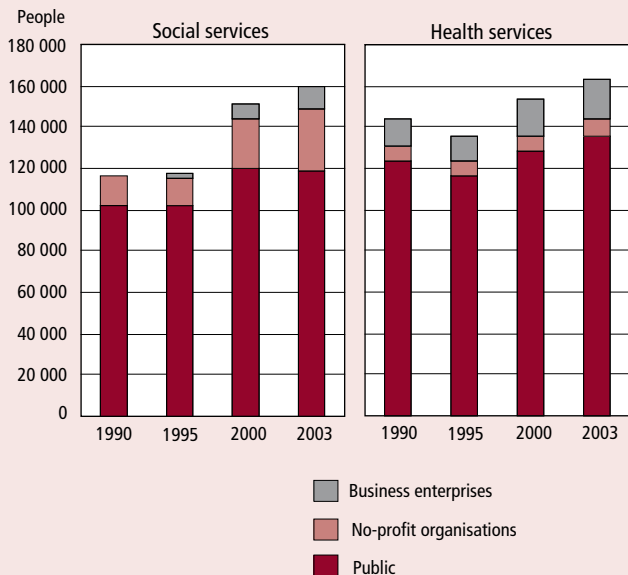
Private providers of social services

	2000	2005	Of which		
			Total	Non-profit organisations	Business enterprises
Number of operating units					
Main activity (Classification of Economic Activities 2002)					
Social services, total	2 664	3 550	1 726	1 803	21
Institutions for children and young people	259	490	77	412	1
Institutions for people with intellectual disabilities	8	7	5	2	-
Institutions for older people	53	43	34	9	-
Institutions for substance abusers	39	54	43	11	-
Sheltered housing and group homes	1 042	1 361	691	670	-
Mother-and-baby homes and shelters for battered family members	21	28	26	1	1
Other institutions and housing services	112	134	123	10	1
Child day care	609	667	388	264	15
Day centres	59	90	85	5	-
Home-help services	353	481	97	384	-
Sheltered work and vocational rehabilitation	39	65	58	6	1
Guidance and counselling centres	-	-	-	-	-
Community-based rehabilitation for substance abusers	23	28	27	1	-
Other social care	47	102	72	28	2
Personnel, 31 Dec, total	21 987	32 671	20 641	11 923	107

Private providers of health services

Number of service providers	2000	2001	2002	2003	2004
Laboratory services	642	673	668	603	602
Doctor's surgeries	908	982	1027	1 002	997
X-ray services	318	349	341	327	334
Physiotherapy	1 402	1 442	1 425	1 418	1 426
Occupational health care	660	671	681	630	668
Dental care	294	335	349	368	387
Personnel, 31 Dec, total	30 246	31 935	33 654	34 035	33 914

Personnel shares accounted for by public and private providers, 1990, 1995, 2000 and 2003



8 Social assistance

	1995	2003	2004	2005
Households and persons receiving social assistance				
Households	339 020	261 430	251 017	238 848
Persons	583 922	424 126	401 031	377 376
% of the population	11.4	8.1	7.7	7.2

Persons receiving social assistance by age, %

-17	27	27	27	26
18-29	30	26	27	27
30-39	17	14	14	14
40-49	15	15	15	15
50-64	8	14	14	14
65-	3	4	4	4

Households receiving social assistance by type of household, %

Lone dwellers	63	68	69	70
Couples without children	12	8	8	8
Two-parent families	15	11	10	10
Single-parent families	10	13	13	12

Households receiving social assistance by duration of primary social assistance, %

1-3 months	49	42	43	43
4-6 months	18	19	19	19
7-9 months	13	15	14	15
10-12 months	20	24	24	24

Gross expenditure on primary social assistance, current prices

EUR per month/household	265	331	327	330
-------------------------	-----	-----	-----	-----

9 Personnel

Municipal employees by activity

Man-years	1995	2000	2004	2005	%
					of social services and health care
Social and health services, total	195 900	211 000	221 600	218 400	
Social services, total	88 800	98 700	102 000	97 500	100
Social services with accomodation	23 800	25 900	27 700	27 500	28
Institutions for children and young people	1 860	2 060	2 090	2 270	2
Institutions for people with intellectual disabilities	3 330	3 560	3 880	3 900	4
Institutions for older people	15 030	14 690	14 570	13 010	13
Institutions for substance abusers	290	350	400	290	0
Sheltered housing and group homes	2 760	4 850	6 300	7 360	8
Other institutions and housing services	500	430	460	630	1
Community-based social services	65 000	72 800	74 300	70 100	72
Child day care	41 600	47 700	46 900	43 900	45
Day centres	870	1 060	1 190	1 390	1
Home-help services	12 590	12 790	13 260	12 020	12
Sheltered work and vocational rehabilitation	1 560	1 640	1 900	1 800	2
Community-based rehabilitation for substance abusers	390	360	430	430	0
Other social care	8 050	9 210	10 550	10 520	11
Health care	107 100	112 300	119 700	120 900	100
Hospital care proper	61 700	63 800	68 900	70 200	58
Medical practice	45 470	48 490	50 770	50 770	42

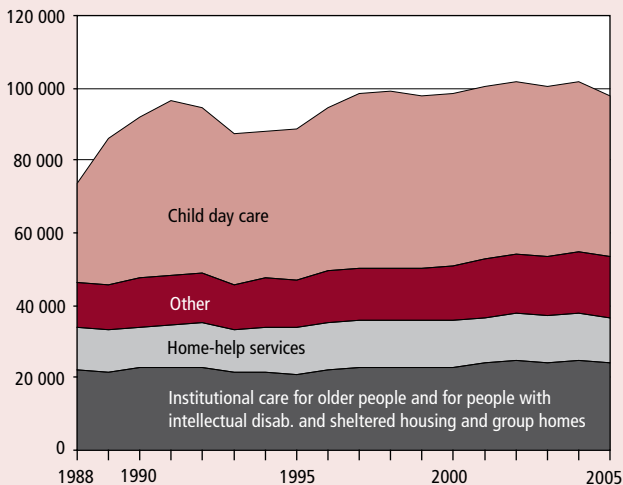
Source: Statistics Finland

Municipal employees by occupational group/10 000 inhabitants

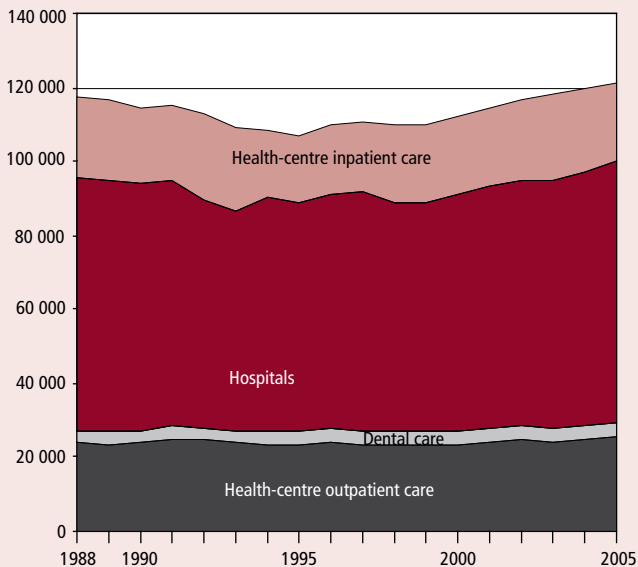
Number of employees	1995	2000	2004	2005
Medical doctors	19.3	21.5	22.0	22.1
Dentists	4.3	4.4	4.5	4.5
Social workers	8.6	9.1	9.9	10.0
Social work instructors	8.6	10.9	12.6	13.1
Nurses	43.6	54.2	66.9	69.1
Practical nurses	42.5	46.9	59.9	64.3
Assistant nurses and hospital ward assistants	42.0	37.8	34.9	33.4
Home care assistants/over-75s	486	416	295	252
Pre-primary education teaching professionals /children aged 1–6	217	272	315	303
Children's nurses and kindergarten assistants /children aged 1–6	394	487	512	488
Family childminders/children aged 1–6	456	485	454	439

Source: Statistics Finland

Municipal employees in social care, 1988–2005



Municipal employees in health care, 1988–2005



10 Expenditure

Social protection expenditure by function, current prices, EUR million

	1995	2000	2003	2004	2005*
Sickness and health	6 144	7 637	9 399	10 005	10 400
Disability	4 394	4 467	4 970	5 178	5 230
Old age	8 480	10 233	12 448	13 068	13 750
Survivors	1 144	1 276	1 415	1 446	1 480
Family and children	3 920	4 007	4 281	4 495	4 680
Unemployment	4 220	3 372	3 707	3 845	3 765
Housing	441	467	430	436	440
Other	615	671	814	811	820
Administration	843	1 011	1 252	1 284	1 350
Total	30 200	33 142	38 716	40 567	41 915
% of GDP	31.5	25.1	26.5	26.7	26.6

Financing of social protection expenditure, %

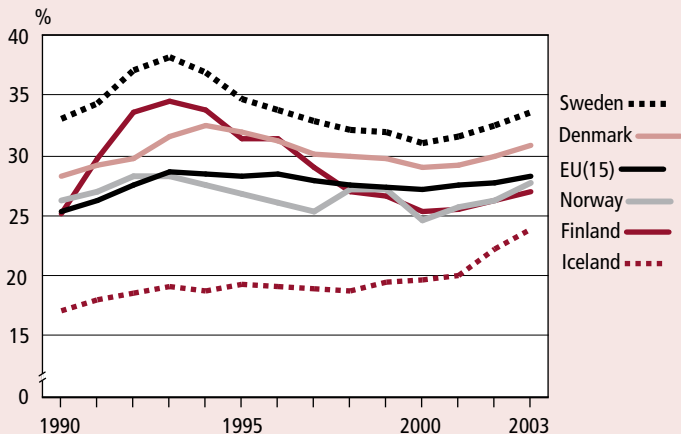
	1995	2000	2003	2004	2005*
State	29.1	24.1	24.8	25.0	25.1
Municipalities	16.7	19.1	19.6	19.4	19.6
Employers	33.7	37.7	39.0	39.3	38.9
Insured persons	13.7	12.1	10.9	10.9	11.3
Other income	6.9	7.1	5.7	5.3	5.2
Total	100	100	100	100	100

Per capita social expenditure in EU and Nordic countries using Purchasing Power Parity, EUR

	1995	2000	2001	2002	2003
Finland	5 109	5 750	6 001	6 339	6 560
Sweden	6 235	7 334	7 501	7 892	8 258
Norway	5 390	7 845	8 283	8 279	8 728
Denmark	6 123	7 314	7 610	7 770	8 115
Iceland	3 619	4 936	5 166	5 649	6 039
EU (15)	4 990	6 192	6 441	6 710	6 926

Source: New Cronos database 2006, Eurostat

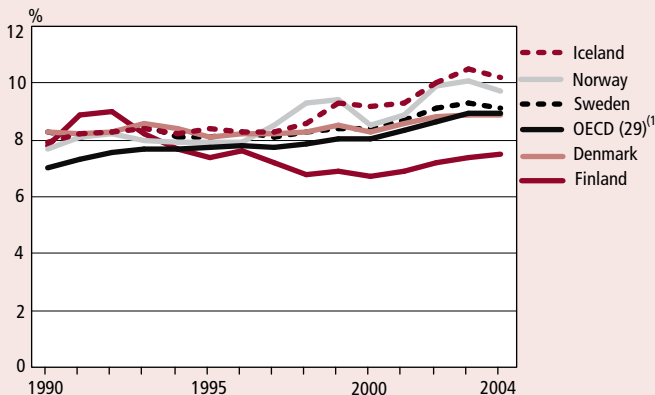
Social expenditure as a share of GDP in EU and Nordic countries, 1990–2003, %



Health expenditure by function, current prices, EUR million

	1995	2000	2003	2004	2005*
Inpatient care	3 002	3 328	3 884	3 909	4 085
Outpatient care (excl. dental care)	1 979	2 560	3 297	3 660	3 850
Dental care	396	475	580	595	615
Medicines and pharmaceutical products	1 005	1 351	1 707	1 830	1 940
Public investments	198	260	351	338	350
Medical devices	218	317	363	376	390
Other	353	412	495	532	575
Total	7 149	8 703	10 677	11 240	11 850
% of GDP	7.5	6.6	7.3	7.4	7.5

Health care expenditure as a share of GDP in OECD countries¹⁾, 1990–2004, %



Financing of health expenditure, %

	1995	2000	2003	2004	2005*
State	28.4	18.4	18.3	19.9	19.8
Municipalities	33.8	41.3	41.3	39.7	40.1
Social Insurance Institution	13.4	15.4	16.5	17.0	16.9
Households	20.5	20.4	19.4	18.9	18.8
Other private financing	3.9	4.5	4.4	4.5	4.4
Total	100	100	100	100	100

Per capita health expenditure in OECD countries using Purchasing Power Parity, USD

	1995	2000	2002	2003	2004
Finland	1 430	1 716	2 012	2 104	2 235
Sweden	1 734	2 271	2 593	2 745	2 825e
Norway	1 893	3 080	3 616	3 769	3 966
Denmark	1 844	2 380	2 656	2 743b	2 881e
Iceland	1 854	2 623	2 948	3 159	3 331e
OECD (29) ⁽¹⁾	1 536	2 008	2 330	2 484	2 621

Source: OECD Health Data, Oct. 2006

1) Excl. Slovakia



Further information

STAKES

E-mail: firstname.lastname@stakes.fi

Alcohol and Drug Statistics

Information on consumption of alcoholic beverages, drug use and related harm.

Sanna Rönkä phone +358 9 3967 2378

Kristiina Kuussaari phone +358 9 3967 2477

Ari Virtanen phone +358 9 39671

Cancer Register

Information on diagnosed cases of cancer. The register is maintained by the Cancer Society of Finland.

Risto Sankila phone +358 9 135 331, e-mail: registry@cancer.fi

STAKES/Mika Gissler phone +358 9 3967 2279

Care Registers for Social Welfare and Health Care HILMO

Information on institutional care in social and health care and forms of care replacing institutional care.

Health Care

Niina Kontio phone +358 9 3967 2670

Simo Pelanteri phone +358 9 3967 2356

Social Care

Reijo Ailasmaa phone +358 9 3967 2062

Child Welfare

Information on children and young persons placed outside the home and/or taken into care by reason and type of placement.

Salla Säkkinen phone +358 9 3967 2064

Tuula Kuoppala phone +358 9 3967 2234

Health Care Activity Statistics

Information on outpatient visits in public health care. For inpatient care, please see the Care Register.

Hannu Rintanen phone +358 9 3967 2456

Sanna-Mari Saukkonen
phone +358 9 3967 2363

Health Care Professionals

Information on professional persons.

Reijo Ailasmaa phone +358 9 3967 2062

Child Maintenance and Custody

Information on maintenance allowance, maintenance payment agreements, investigation and establishment of paternity, custody of children and access rights.

Salla Säkkinen phone +358 9 3967 2064

Anne Forss phone +358 9 3967 2379

Medical Birth Register

Information on births, deliveries and parturients.

Eija Vuori phone +358 9 3967 2244

Municipal Employees in Social Welfare and Health Care

Information on municipal employees and personnel structure in social and health care.

Reijo Ailasmaa phone +358 9 3967 2062

Private Service Provision, Health Care

Information on type of service, personnel, examinations and patient visits of private providers of health care services.

Tapani Niskanen phone +358 9 3967 2343

Private Service Provision, Social Welfare

Information on private sector units in social care and the extent of private service provision.

Sari Kauppinen phone +358 9 3967 2373

Register of Congenital Malformations

Information on congenital anomalies detected in newborn children.

Annikka Ritvanen

phone +358 9 3967 2376

Register of Induced Abortions and Sterilisations

Information on induced abortions and sterilisations performed in Finland.

Tiina Sévon phone +358 9 3967 2306

Anne Soimula phone +358 9 3967 2359

Register of Visual Impairment

Information on persons with a permanent visual impairment. The register is maintained by the Finnish Federation of the Visually Impaired, www.nkl.fi

Matti Ojamo phone +358 9 3960 4712
STAKES/ Mika Gissler phone +358 9 3967 2279

Social Assistance

Information on social assistance recipients and amounts paid in social assistance.

Kaarina Lamminpää phone +358 9 3967 2035
Sirikka Kiuru phone +358 9 3967 2099

Social Welfare and Health Care in Municipalities

Information on the use and costs of social welfare and health care services by municipality, including information on child day care, home-help services and institutional care for older persons.

Esa Arajärvi phone +358 9 3967 2355
Sirikka Kiuru phone +358 9 3967 2099
Salla Säkkinen phone +358 9 3967 2064

Statistics on Health Expenditure and Financing

Information on health expenditure and financing in Finland.

Nina Knape phone +358 9 3967 2683
Petri Matveinen phone +358 9 3967 2682

Statistics on Social Protection Expenditure

Information on social expenditure and financing in Finland.

Nina Knape phone +358 9 3967 2683
Esa Arajärvi phone +358 9 3967 2355

DATA FOR RESEARCH PURPOSES

Data from the national personal data registers on health care can be obtained for research purposes through authorisation by STAKES. Further, authorisation from the Ministry of Social Affairs and Health is required to obtain confidential data from more than one social welfare and health-care service unit.

Pirkko Joensuu phone +358 9 3967 2207

Finnish Information Centre for Register Research

phone +358 9 39 671

INTERNATIONAL CO-OPERATION

European Registration of Congenital Anomalies (EUROCAT) and International Clearinghouse for Birth Defects

Monitoring Systems (ICBDMS)

Annuikka Ritvanen phone +358 9 3967 2376

Finnish National Focal Point of the European Union's REITOX drug information network

Sanna Rönkä phone +358 9 3967 2378
Kristiina Kuussaari phone +358 9 3967 2477
Ari Virtanen phone +358 9 39671

Nordic co-operation in alcohol statistics

Ari Virtanen +358 9 39671
Kristiina Kuussaari phone (09) 3967 2477

Nordic Social Statistical Committee (NOSOSCO)

Sari Kauppinen phone +358 9 3967 2373

Nordic Medico-Statistical Committee (NOMESCO), Eurostat, OECD and WHO

The Finnish sources, except for the Register of Visual Impairment and Cancer Register, meet the OSF quality criteria.



New statistical publications from STAKES

- Statistical Yearbook on Social Welfare and Health Care in Finland 2006 • EUR 33
- Yearbook of Alcohol and Drug Statistics 2006 • EUR 28



National Research and Development
Centre for Welfare and Health

Address: Lintulahdekuja 4
BOX 220 FIN-00531
Helsinki FINLAND

Fax: +358 9 3967 2450

Internet: <http://www.stakes.fi>

ISBN 951-33-1909-1

M237

