

TO THE READER	3
GENERAL FACTS ABOUT FINLAND	4
1 POPULATION AND HEALTH BEHAVIOUR	
Population by age	8
Vital statistics.....	8
2 SERVICES FOR CHILDREN AND FAMILIES	
Child day care	12
Child allowance	13
Child welfare.....	13
Child maintenance and custody.....	14
Other services for children and families	14
3 CARE AND SERVICES FOR ELDERLY PEOPLE	
Institutional care and housing services	15
Home-help services.....	16
4 SERVICES FOR PEOPLE WITH DISABILITIES	
Services under the Services and Support for the Disabled Act	17
Institutional care and housing services	17
Other services	18
5 ALCOHOL AND DRUGS	
Substance use	20
Services for substance abusers.....	22
Costs from alcohol and drugs	23
6 HEALTH CARE	
Health centres.....	24
Specialised health care.....	24
Private health care	25
Periods of care and care days in inpatient health care.....	25
Treatment of mental disorders	26
Legally induced abortions	27
Sterilisations	27
7 PRIVATE SOCIAL AND HEALTH SERVICES	
Private providers of social services.....	28
Private providers of health services.....	28
8 SOCIAL ASSISTANCE	30
9 PERSONNEL	
Municipal employees by activity	31
Municipal employees by occupational group	32
10 EXPENDITURE	
Social protection expenditure by function.	34
Financing of social expenditure.....	34
Per capita social expenditure in EU and Nordic countries	34
Health expenditure by function.....	35
Financing of health expenditure.....	35
Per capita health expenditure in OECD countries	36
Sources	38
Explanation of symbols.....	39

TO THE READER

The National Institute for Health and Welfare (THL) was formed on 1 January 2009 through the merger of the National Research and Development Centre for Welfare and Health (STAKES) and the National Public Health Institute (KTL). Among other things, THL maintains and develops national statistics and registers in the field, and also processes and disseminates information based on the needs of its target audience.

Facts about Social Welfare and Health Care in Finland includes information from the late 1970s to 2007 on health behaviour, social welfare services, alcohol and drugs, health care services, social assistance, personnel and expenditures. The data come primarily from THL's statistics, registers and surveys, but also from for instance the databases of Statistics Finland and the Social Insurance Institution. In addition, international information has been obtained among others from, OECD and Eurostat. More detailed statistical information on social and health care can be obtained from, among others, the Statistical Yearbook on Social Welfare and Health Care and the SOTKANet Indicator Bank (www.sotkanet.fi). Publication editor was Riitta Koskinen (Senior Planning Officer).

Helsinki, June 2009

Salla Säkkinen
Development Manager

THL
National Institute for Health and Welfare
Department of information
P.O. Box 30, FI-00271 Helsinki
Tel. +358 20 610 6000, fax +358 20 610 7497
Internet: <http://www.thl.fi>

Finland

Population: 5.3 million

Capital: Helsinki
(571 000 inhabitants, the metropolitan area about one million)

Official languages:
Finnish (91.2%)
Swedish (5.5%)

Currency unit: Euro

Total area¹ 390 920 km²

Land boundary¹
With Sweden 614 km
With Norway 736 km
With Russia 1 340 km
Boundary of territorial waters 1 250 km

Population per km² of land area 2007 17.4

Population in urban areas 2007, % 65.0



Weather conditions²

	Helsinki	Sodankylä (Lapland)
Mean temperature in 2008		
February	1.1 C°	- 9.5 C°
July	17.6 C°	13.4 C°
Mean temperature in 1971–2000	5.6 C°	- 0.8 C°
Number of days with precipitation in 2008	129	111

Municipalities by number of inhabitants 2009
(1 Jan)³

0–1 999	48
2 000–5 999	134
6 000–9 999	66
10 000–19 999	45
20 000–39 999	31
40 000–99 999	17
100 000–	7
Total	348

Population aged 15 and over with an
educational qualification %, 2006 (31 Dec)

Total	64.1
Tertiary education	25.8
Upper secondary education	38.3

Rate of taxation 2007, % of GDP	43.0*
--	--------------

Unemployment 2007

Unemployed, total	183 000
Unemployment rate, %	6.9
Males	6.5
Females	7.2
Population aged 15–24	16.5

Women's labour force participation 2007, % of population aged 15–64	73.8
--	-------------

Sources: ¹ National Land Survey of Finland, www.maanmittauslaitos.fi/en

² Finnish Meteorological Institute, www.fmi.fi/en

³ Association of Finnish Local and Regional Authorities, www.localfinland.fi

If not otherwise indicated, the source of data is Statistics Finland, www.stat.fi

Social protection in Finland

The constitution of Finland guarantees the basic economic, social and educational rights of all people living in the country.

Social protection is made up of preventive social and health care, social welfare and health services, and sickness, unemployment, old age and other benefits.

Social protection aims to safeguard the working and living environment of the population, and ensure good standards of health and work ability, sufficient income, services, and social security, at different stages of life. Practically every household at some point receives some form of income transfer or uses social and health services.

The Finnish social protection system is structured in line with the principles of the Nordic welfare model. The main features of the Nordic welfare state are:

- the principle of universality (the right of all to social protection regardless of where they live, their profession or economic position)
- a strong public sector
- tax funding based on the legislative rights of citizens/residents
- equal treatment
- a relatively high level of benefits

The public sector plays a central role in the development of social protection. Services and income protection are guided by legislation. Services are mainly funded by taxation. Income protection expenditure is covered by payments collected from employers, insurance contributions, and state funds.

Social spending and funding

Social spending mainly consists of expenditure on social welfare and health services, pensions, sickness, and unemployment.

Finland's social spending as a proportion of GDP is below the EU average. In 2007, it stood at 25,4 per cent of GDP or EUR 45,6 billion.

Funding for basic services is mainly provided by the municipalities. They play a key role in providing social and health services, and they cover about 65 per cent of the costs of service provision. State subsidies account for a fourth of these costs, and client payments cover the remaining 10 per cent.

1 Population and health behaviour

Population by age ¹

	1995	2006	2007	2007 Females	2020e
0–6	454 940	401 941	404 650	197 865	428 926
7–14	516 830	499 240	489 940	240 046	489 571
15–24	632 169	657 351	659 186	322 387	598 573
25–49	1 952 541	1 734 315	1 730 678	849 049	1 686 321
50–64	827 929	1 115 391	1 140 799	574 624	1 067 345
65–74	432 277	465 025	462 640	250 029	720 478
75–84	233 122	309 948	314 299	195 875	401 847
85–	67 018	93 744	98 292	73 822	153 711
Total population	5 116 826	5 276 955	5 300 484	2 703 697	5 546 772
Females, %	51.3	51.0	51.0	51.0	50.8
Population in urban areas, %	58.2	63.2	65.0	65.9	66.3

Population by age, %

	1995	2006	2007	2007 Females	2020e
0–6	8.9	7.6	7.6	7.3	7.7
7–64	76.8	75.9	75.9	73.5	69.3
65–	14.3	16.5	16.5	19.2	23.0
75–	5.9	7.7	7.8	10.0	10.0

Vital statistics ¹

	1987	1995	2000	2006	2007
Births	60 069	63 125	56 771	59 054	58 915
Live births	59 742	62 823	56 541	58 861	58 727
/1000, mean population	12.1	12.3	10.9	11.2	11.1
Stillbirths	327	302	230	193	188
/1000 births	5.4	4.8	4.0	3.3	3.2
Perinatal deaths	522	435	329	285	288
/1000 births	8.8	6.9	5.8	4.8	4.9
Infant deaths	355	245	206	160	149
/1000 live births	5.9	3.9	3.6	2.7	2.5

	1987	2002	2003	2006	2007
Deaths	47 988	49 389	49 033	48 065	49 077
/1000, mean population	9.7	9.5	9.4	9.1	9.3
Males	24 290	23 985	23 935	24 315	24 809
Females	23 698	25 404	25 098	23 750	24 268
Immigrants	9 142	18 113	17 838	22 451	26 029
Emigrants	8 475	12 891	12 083	12 107	12 443
Net immigration	667	5 222	5 755	10 344	13 586
/1000, mean population	0.1	1.0	1.1	2.0	2.6
Population growth	12 545	11 359	13 437	21 375	23 529
/1000, mean population	2.5	2.2	2.6	4.1	4.4
General fertility rate	47.6	49.7	46.6	50.0	50.1
Total fertility rate	1.59	1.72	1.76	1.8	1.83

Parturients ²

	1987	1995	2000	2006	2006
Average age, years	28.9	29.7	29.9	30.0	30.0
Under-20s, %	3.2	2.5	2.9	2.6	2.4
Over-35s, %	13.3	15.1	18.4	18.7	19.2
Primiparas, %	39.8	39.1	40.9	42.2	42.0
Married or co-habiting, %	92.8	89.9	88.1	91.8	92.1
Has smoked during pregnancy, %	15.0	14.7	14.4	14.6	14.5

Newborns ²

	1987	1995	2000	2006	2007
Average weight, g	3 548	3 539	3 515	3 499	3 492
Average length, cm	50.2	50.2	50.1	50.0	50.0
Premature birth (< 37 weeks), %	5.6	5.7	6.3	5.9	5.7
Low birth weight (< 2500 g), %	3.9	4.3	4.6	4.5	4.5
Twins or triplets, %	2.2	2.9	3.2	3.0	3.0
Discharged within 7 days, %	75.9	91.8	92.3	93.0	92.8

Maternal deaths ^{1,2}

	1991–1995	1996–2000	2001–2005	2006–2007
Maternal deaths/year	3.2	2.6	3.6	2.5
/100 000 live births	5.0	4.5	6.3	4.3

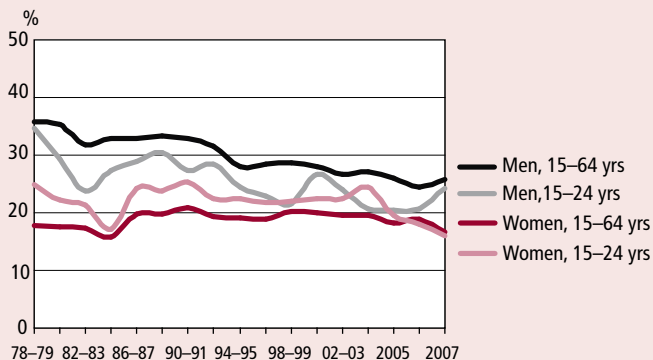
Life expectancy ¹

	1990		2006		2007	
	Males	Females	Males	Females	Males	Females
At age 0	70.7	78.8	75.8	82.8	75.8	82.9
At age 55	20.6	26.2	24.4	29.7	24.6	29.7

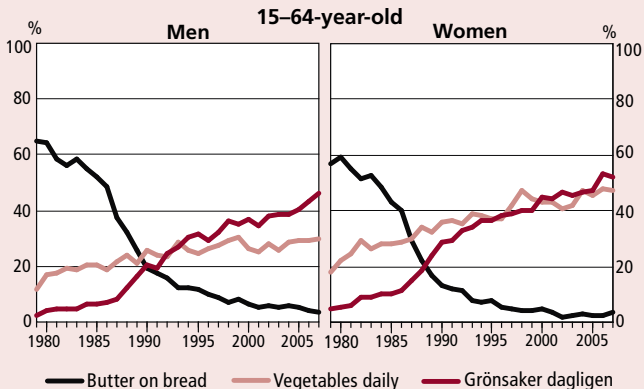
Causes of death ¹

	1990		2006		2007	
	Deaths /100 000 inhabitants		Deaths /100 000 inhabitants		Deaths /100 000 inhabitants	
Diseases of the circulatory system	23 988	499.5	19 878	291.9	20 193	287.6
Neoplasms	10 086	204.9	11 046	168.4	11 097	165.5
Diseases of the respiratory system	3 750	79.8	2 126	31.4	2 232	32.2
Diseases of the digestive system	1 317	27.6	1 307	19.2	1 377	19.8
Alcohol-related diseases	1 161	22.5	2 020	32.2	2 167	34.5
Accidental injuries and violence	4 351	87.6	3 762	63.7	3 674	61.7
- of which accidental injuries	2 483	50.6	2 510	41.0	2 484	40.3
- of which suicides	1 520	30.0	1 062	19.3	995	17.9
Total	50 091	1 036.8	48 106	725.1	49 093	721.7

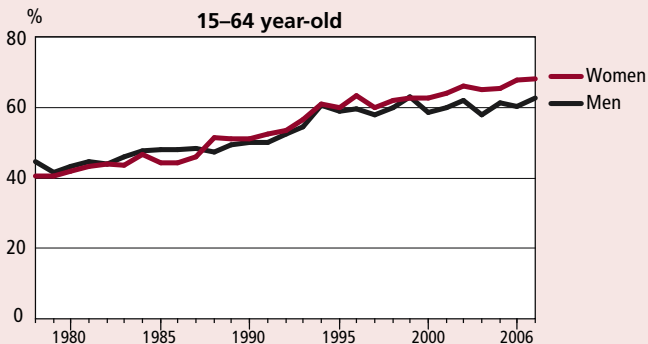
Proportion of daily smokers³



Eating habits among the adult population, 1979–2007³



Proportion of people pursuing leisure-time physical activities at least 2–3 times a week³



2 Services for children and families

Child day care⁴

	1995	2000	2006	2007
Children in day care, total 31 Dec.	..	214 547	205 684	212 745
Municipal day care	189 918	200 487	189 332	195 265
Municipal day-care centres	115 583	121 676	126 338	133 134
Private outsourced day-care centres	8 854	10 181	9 314	9 450
Family day care	65 481	68 630	53 680	52 681
Private day care	..	14 060	16 352	17 480

Children in day care, % 1–6-year-olds	..	59.1	60.0	61.5
Municipal day care	48.4	55.2	55.2	56.5
Municipal day-care centres	29.5	33.5	36.8	38.5
Private outsourced day-care centres	2.3	2.8	2.7	2.7
Family day care	16.7	18.9	15.6	15.2
Private day care	..	3.9	4.8	5.1

Preschool education

Children receiving preschool education, total	..	58 654	57 452	56 984
---	----	--------	--------	--------

Supervised play groups

Average daily attendance in supervised play groups	24 388	27 287	21 209	21 857
--	--------	--------	--------	--------

Home-care allowance⁵

	1995	2000	2006	2007
Recipient families, total 31 Dec	..	72 546	66 241	65 316
Recipient families/1000 children aged 0–2	..	424	379	371
Children receiving home-care allowance, 31 Dec	..	111 595	100 938	98 930
Home-care allowance paid, EUR million	..	315.3	301.3	295.8

Child allowance⁵

	1995	2000	2006	2007
Children receiving child allowance, 31 Dec	1 097 449	1 063 680	1 030 712	1 024 506
Families receiving child allowance, 31 Dec	614 620	586 834	568 275	565 212
Child allowances paid, EUR million	1 474.7	1 387.1	1 419.4	1 411.4

Child welfare⁶

	1995	2000	2006	2007
Children and young people in community care interventions,	30 686	49 351	59 058	62 485
% of all under-18s	2.6	4.3	5.4	5.7

Children and young people placed outside the home, total	10 955	12 861	15 774	16 059
Foster care	5 340	5 776	5 594	5 526
Residential care	3 921	5 011	7 646	8 095
Other	1 694	2 074	2 534	2 438
Placements, 0–17-year-olds, % of under-18s	0.8	0.9	1.2	1.2

Children and young people in care, based on the year's last placement decision	6 389	7 327	9 605	10 207
New cases	1 198	1 661	2 425	2 758

Child maintenance and custody⁷

	1995	2000	2006	2007
Agreements confirmed by the Social Welfare Board on				
- custody, right of access and residence of child	30 911	36 727	40 676	41 552
- maintenance payments	26 808	34 316	33 573	35 237
Children receiving maintenance payments 31.12., total				
	103 101	107 962	98 582	96 111
% of all under-18s	8.8	9.5	9.0	8.8

Maintenance allowances and recovered maintenance payments

Maintenance allowances paid, EUR 1000	119 520	139 439	136 144	144 014
Maintenance payments recovered for children, EUR 1000				
	15 353	9 558	7 946	6 877
Total, EUR 1000	134 873	148 997	144 090	150 891
Total EUR per child	1 308	1 380	1 462	1 570

Other services for children and families⁴

	1995	2000	2006	2007
Families with children receiving municipal home help, total				
	29 992	18 049	11 031	10 387
% of all families with children under 18	4.7	2.9	1.9	1.8

Child guidance and family counselling

Clients during year	66 917	72 142	72 791	74 548
Children and young people as clients, total	..	30 091	32 544	33 343
% of all under-18s	..	2.7	3.0	3.0
Adults as clients, total	..	42 051	40 247	41 205

Mother-and-baby homes

Clients during year	..	540	735	720
---------------------	----	-----	-----	-----

Shelters for battered family members

Clients during year	..	3 501	3 671	3 740
---------------------	----	-------	-------	-------

3 Care and services for elderly people

	1995	2000	2006	2007
Living at home, % of over-75s	..	89.8	89.4	89.4

Institutional care and housing services

Residential homes for elderly people⁹

Clients, 31 Dec, total	23 088	21 325	19 082	19 016
Over-65s	22 546	20 630	18 538	18 515
% of over-65s	3.1	2.7	2.1	2.1
Over-75s	19 535	18 093	16 671	16 677
% of over-75s	6.5	5.3	4.1	4.0
Care days during year, total	8 571 760	7 856 748	6 969 429	6 992 464

Inpatient care in health centres¹⁰

Long-term clients over 65, 31 Dec	12 255	12 164	11 201	10 487
% of over-65s	1.7	1.6	1.3	1.2
Care days during year, over-65s	6 375 905	6 865 167	6 626 179	6 384 450
Long-term clients over 75, 31 Dec	10 312	10 360	9 725	9 168
% of over-75-s	3.4	3.0	2.4	2.2
Care days during year, over-75s	5 216 899	5 677 595	5 626 201	5 425 818

Ordinary sheltered housing for elderly people⁹

Over-65s	..	10 007	8 692	8 511
% of over-65s	..	1.3	1.0	1.0

Sheltered housing with 24-hour assistance⁹

Clients, 31 Dec, total	..	7 302	18 799	20 771
Over-65s	..	6 799	18 064	20 026
% of over-65s	..	0.9	2.1	2.3
Over-75s	..	5 857	15 748	17 472
% of over-75s	..	1.7	3.9	4.2

Home-help services

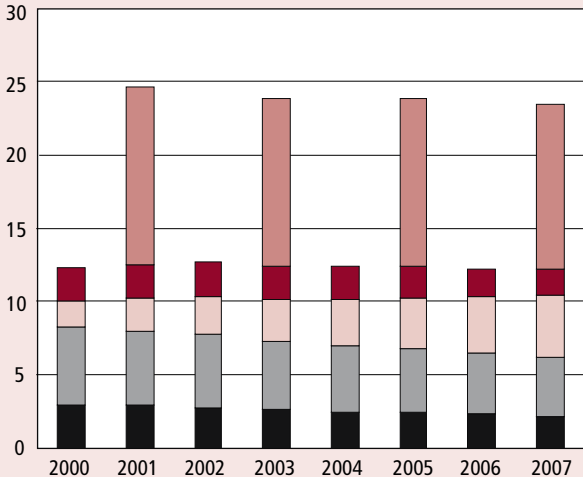
	1995	2000	2006	2007
Regular home care⁸				
(home-help services and home nursing)				
Clients over 65, 30 Nov	53 293	52 353 ^{a)}	54 316 ^{b)}	55 603
% of over-65s	7.3	6.6 ^{a)}	6.5 ^{b)}	6.4
Clients over-75s, 30 Nov	41 294	42 231 ^{a)}	45 037 ^{b)}	46 739
% of over-75s	13.8	12.1 ^{a)}	11.5 ^{b)}	11.3
Support for informal care⁴				
Clients over 65 / year	11 294	14 355	20 370	21 765
% of over-65s	1,5	1,8	2.3	2.5
Clients over-75s / year	8 041	10 300	14 898	15 983
% of over-75s	2.7	3.0	3.7	3.9
Households with older persons receiving home help during year⁴				
	86 466	83 148	90 125	92 798
% of over-65s	11.8	10.7	10.4	10.6
Clients over 65 in support services during year⁴				
	97 967	105 195	109 979	114 740
% of over-65s	13.4	13.5	12.7	13.1

a) year 2001

b) year 2005

Coverage of care and services for older people 2000–2007

Clients over 75, % of over-75s



- Regular home care^{a)}
- Ordinary sheltered housing
- Sheltered housing with 24-hour assistance
- Residential homes for older people
- Long-term care at health centres

a) Client census in regular home care has been conducted every other year.

4 Services for people with disabilities

Services under the Services and Support for the Disabled Act ⁴

	1995	2000	2006	2007
Service recipients during year				
Transport services for seriously disabled people	45 839	66 568	84 269	86 726
Interpreter services	2 808	3 137	3 791	3 961
Sheltered housing for seriously disabled people	..	1 894	3 089	3 375
Housing alterations	8 125	8 599
Personal assistance	1 835	2 817	4 583	5 034

Institutional care and housing services ⁴

	1995	2000	2006	2007
Clients 31 Dec				
Institutions for people with intellectual disabilities ^{a)}	3 699	2 960	2 554	2 589
Housing for people with intellectual disabilities, 24-hour assistance	..	3 344
Housing for people with intellectual disabilities, part-time assistance	..	2 476
Group housing services for people with disabilities				
- staff available at night	5 371	5 699
- no staff available at night	2 362	2 588
Family care for people with intellectual disabilities ^{a)}	1 304	1 270	1 270	1 262

a) From 2006 onwards, figures on institutional and family care include not only people with intellectual disabilities but also other disabled people.

Other services ⁴

	1995	2000	2006	2007
Clients 31 Dec				
Sheltered work centres for people with disabilities	3 151	3 301
Day and sheltered work centres for people with intellectual disabilities	9 499	10 929
Activities to support employment of disabled people	4 049	3 148
Day and sheltered work centres for people with various disabilities	11 903	13 435
Clients under 65 receiving support for informal care during year				
	6 957	8 090	10 472	11 221

5 Alcohol and drugs

Substance use ¹²⁻¹⁶

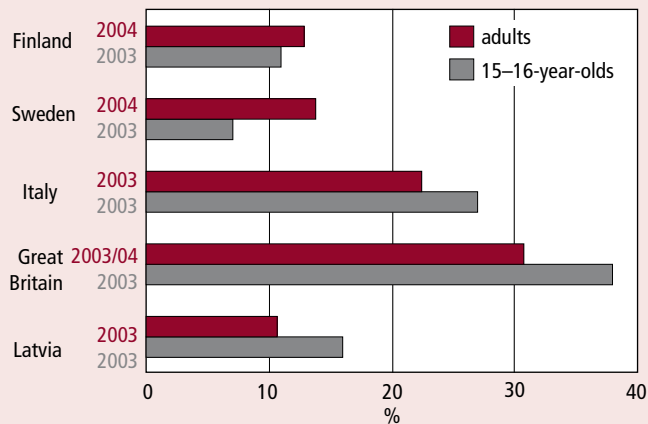
	1990	2005	2006	2007
Consumption of alcoholic beverages, 100% alcohol per capita, litres				
Total consumption	8.9	10.5	10.3	10.5
Undocumented consumption	1.2	2.3	1.9	1.8
Documented consumption	7.7	8.2	8.4	8.7
Consumption of alcoholic beverages in litres per capita:				
Spirits	7.7	6.6	6.8	6.8
Wines	6.2	10.9	11.3	11.9
Cider	0.3	10.1	10.9	11.3
Long drinks	3.7	4.8	5.8	7.0
Beer	81.6	82.5	82.4	85.2

Real price indices for documented consumption of alcoholic beverages, 2000=100

Total	98	90	89	88
Spirits	106	73	73	72
Wines	101	95	95	94
Beer	107	93	93	91

Intoxicated at least once a month, %	1995	2003	2005	2007
14-18-year-olds	17	22	20	19
	1992	2004*	2005	2006*
15-69-year-olds	17	13	9	11
Males	27	18	14	17
Females	8	7	5	5

Experimental or habitual use of cannabis in selected EU countries



Experimental or habitual use of cannabis, %^{16, 19}

		Age group			
		15-24	25-34	35-69	Total
Males	1992	17	11	3	6
	2006	21	32	10	15
Females	1992	7	9	2	4
	2006	17	19	8	11

Estimated population shares of amphetamine and opiate users, 2005, %²⁰

	Helsinki metropolitan area	Whole country
Amphetamine users	0.7-1.0	0.4-0.7
Opiate users	0.2-0.4	0.1-0.2

Services for substance abuser^{4, 9, 10, 21}

	1997	2005	2006	2007
Clients during year				
A-clinics	39 166	42 775	44 281	45 976
/1000 inhabitants	7.6	8.1	8.4	8.7
Youth clinics	3 702	5 939	5 803	5 281
/1000 inhabitants	0.7	1.0	1.1	1.0
Housing service units	4 066	3 809	3 820	3 892
/1000 inhabitants	0.8	0.7	0.7	0.7
Overnight shelters	1 311	1 291	1 258	1 629
/1000 inhabitants	0.3	0.2	0.2	0.3
Periods of care during year				
Detoxification and rehabilitation centres	21 229	22 389	21 127	22 278
/1000 inhabitants	4.1	4.3	4.0	4.2
Alcohol-related hospital care	33 335	36 914	36 463	37 580
/1000 inhabitants	6.5	7.0	6.9	7.1
Drugs-related hospital care	7 128	8 725	9 016	9 000
/1000 inhabitants	1.4	2.0	1.7	1.7

Year 2007	A-clinics, Detoxification and		Hospital		
	youth clinics	rehabilitation centres	inpatient wards		
	Clients	Periods of care	Periods of care, primary diagnosis		
%			<i>alcohol</i>	<i>drug</i>	<i>medicine and the like</i>
Males	68.2	75.2	79.2	63.1	49.6
Females	31.8	24.8	20.8	36.9	50.4
-19	4.7	2.8	2.3	7.6	11.5
20-29	19.5	15.0	3.9	46.2	27.0
30-39	17.9	19.6	10.2	24.3	17.6
40-49	24.0	30.1	24.7	11.0	19.1
50-59	22.7	24.5	35.3	6.6	14.0
65-	10.1	8.0	23.7	4.4	10.7
Total	51 257	22 278	26 748	1 204	5 071
of which 25-64-year-olds/1000 persons in the same age group	11.9	6.8	7.8	0.3	1.2

Primary reason for seeking drug treatment among clients in services for substance abusers²²

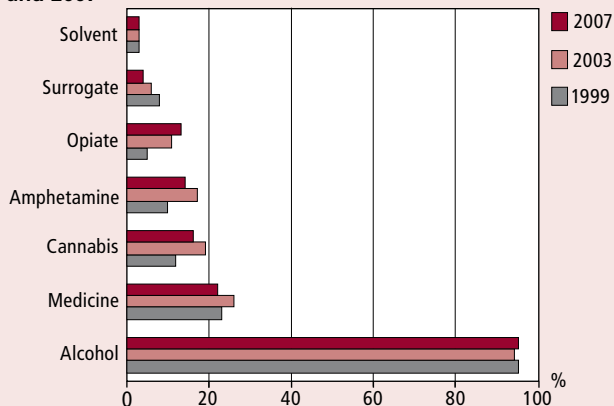
	1998	2003	2004	2005	2006	2007
%						
Opiates	21	31	37	37	41	46
Stimulants	35	28	26	22	21	19
Cannabis	17	16	15	14	14	10
Hypnotics, sedatives	5	6	6	7	7	7
Alcohol (mixed use)	19	19	18	19	17	17

Costs from alcohol and drugs²³

Costs of the harm done by alcohol and drugs by main category, 2006, EUR million

	Alcohol	Drugs and medicine abuse
Direct costs	792	239
Health costs	201	37
Social costs	173	74
Crime control	275	62
Damage to property, surveillance, research, substance abuse prevention	143	65
Indirect costs	4 478	620

Substance abusers in social and health services in 1999, 2003 and 2007²⁴



6 Health care

Health centres

Primary health care^{25, 10}

	1995	2000	2006	2007
Health-care visits,				
total	23 759 097	25 130 483	24 865 042	25 035 672
/1000 inhabitants	4 652	4 850	4 712	4 723
Visits to prenatal clinics	1 035 447	929 709	1 036 483	1 048 476
Visits to child-health clinics	1 474 894	1 343 243	1 240 475	1 316 441
Visits to school and student health units	2 169 292	1 944 646	1 914 366	1 909 213
Visits to occupational health care	650 545	956 708	1 249 538	1 144 414
Home-nursing visits	3 391 974	3 447 083	3 628 281	3 872 128
Outpatient visits in mental health services	214 802	505 689	647 341	675 202
Oral health care visits, total	4 786 196	4 848 889	4 942 152	4 981 064
/1000 inhabitants	937	936	937	940

Institutional care¹⁰

Periods of inpatient care	198 937	251 697	238 096	238 593
/1000 inhabitants	39	49	45	45
Care days	7 003 030	7 563 714	7 324 206	7 076 515
/1000 inhabitants	1 371	1 461	1 388	1 335

Specialised health care^{26, 10}

	1995	2000	2006	2007
Outpatient visits, total	5 852 144	6 197 702	6 893 884	6 945 597
/1000 inhabitants	1 130	1 196	1 308	1 310

Institutional care¹⁰

Periods of inpatient care	1 073 603	1 098 746	1 076 519	1 054 911
/1000 inhabitants	210	212	204	199
Care days	7 973 684	6 494 956	5 964 839	5 746 893
/1000 inhabitants	1 561	1 255	1 130	1 084

Private health care^{10, 30}

	1996	1998	2003	2004	2005
Outpatient visits, total, million	13,6	14,5	16,7	16,3	17,1
/1000 inhabitants	2 651	2 818	3 196	3 141	3 235
Periods of care	49 555	55 015	63 961	66 434	72 208
/1000 inhabitants	10	11	12	13	14
Care days, total	499 000	489 061	470 277	494 868	482 082
/1000 inhabitants	97	95	90	95	92

Periods of care and care days in inpatient health care¹⁰

Main diagnostic group ICD-10	Periods of care, total		Periods of care/ 1000 inhabitants		Care days
	1996	2007	1996	2007	2007
Infectious and parasitic diseases	39 561	42 065	7.7	7.9	301 862
Neoplasms	121 296	119 052	23.7	22.5	815 985
Diseases of blood and blood-forming organs	11 543	10 478	2.3	2.0	56 330
Endocrine, nutritional and metabolic diseases	29 018	20 914	5.7	3.9	238 281
Mental disorders	92 012	86 484	18.0	16.3	3 686 112
Diseases of the nervous system	52 929	54 837	10.3	10.3	1 112 074
Diseases of the eye	43 401	53 383	8.5	10.1	74 272
Diseases of the ear	17 264	18 145	3.4	3.4	32 313
Diseases of the circulatory system	197 884	176 240	38.6	33.2	2 418 406
Diseases of the respiratory system	129 731	92 953	25.3	17.5	670 740
Diseases of the digestive system	97 332	93 024	19.0	17.6	425 739
Diseases of the skin and subcutaneous tissue	17 361	12 260	3.4	2.3	86 719
Diseases of the musculoskeletal system and connective tissue	117 704	121 445	23.0	22.9	608 924
Diseases of the genitourinary system	72 133	67 357	14.1	12.7	335 481
Pregnancy, childbirth and the puerperium	90 450	78 713	17.7	14.9	265 056

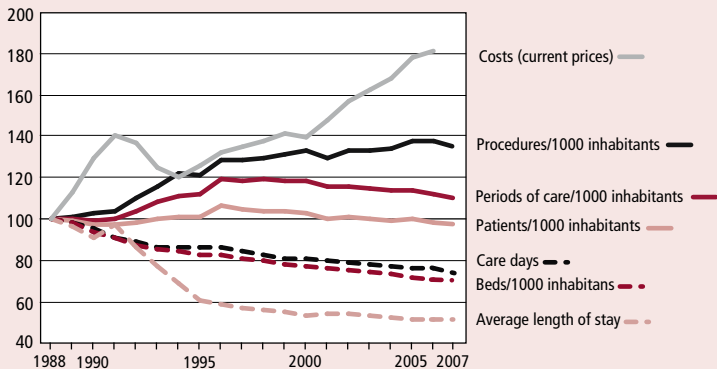
Main diagnostic group ICD-10	Periods of care, total		Periods of care /1000 inhabitants		Care days
	1996	2007	1996	2007	2007
	Certain conditions originating in the perinatal period	7 339	8 827	1.4	1.7
Congenital anomalies	13 973	10 305	2.7	1.9	47 553
Symptoms, signs and ill-defined conditions not elsewhere classified	86 014	77 591	16.8	14.6	357 154
Injury and poisoning	107 602	122 090	21.0	23.0	1 058 751
Factors influencing health status	32 107	26 904	6.3	5.1	167 756
Total	1 377 003	1 300 863	268.7	245.4	12 951 455

Specific disease groups	Periods of care, total		Periods of care/ 1000 inhabitants		Length of stay, days	
	1996	2007	1996	2007	1996	2007
	Diabetes	20 262	12 181	4.0	2.3	12.8
Ischemic heart diseases	64 092	46 506	12.5	8.8	11.5	11.7
Cerebrovascular diseases	32 738	31 503	6.4	5.9	37.2	36.5
Asthma	16 122	6 271	3.1	1.2	5.4	7.4
Schizophrenias	21 120	18 181	4.1	3.4	108.9	57.9

Treatment of mental disorders^{10, 26}

	1995	2000	2005	2006	2007
Outpatient visits, total	1 433 678	1 636 331	2 060 550	2 061 688	2 140 570
/1000 inhabitants	281	316	393	391	404
Periods of care	68 912	82 964	73 454	72 914	71 601
/1000 inhabitants	13.5	16.0	14.0	13.8	13.5
Care days, total	2 554 096	2 282 686	2 095 585	2 085 518	1 991 823
/1000 inhabitants	500.0	441.0	398.7	395.2	375.8

Institutional health care 1988–2007, index 1988 = 100



Legally induced abortions ²⁷

	1995	2004	2005	2006	2007
Abortions	9 872	11 163	10 973	10 689	10 533
/1000 females aged 15–49	7.8	9.4	9.3	9.1	9.0
Abortions among under-20s	1 766	2 456	2 336	2 237	2 158
/1000 females aged 15–19	11.0	15.7	15.0	14.2	13.4
Abortions before 12th week of gestation, %	94.0	93.0	92.7	92.6	92.8
Drug-induced abortions, %	-	44.3	52.9	57.4	63.8

Sterilisations ²⁸

	1995	2004	2005	2006	2007
Sterilisations	11 313	7 272	6 925	5 299	4 724
Males	792	1 616	1 822	1 475	1 404
/1000 males aged 25–54	0.7	1.5	1.7	1.4	1.3
Females	10 521	5 656	5 103	3 824	3 320
/1000 females aged 25–54	9.4	5.3	4.8	3.6	3.2

7 Private social and health services

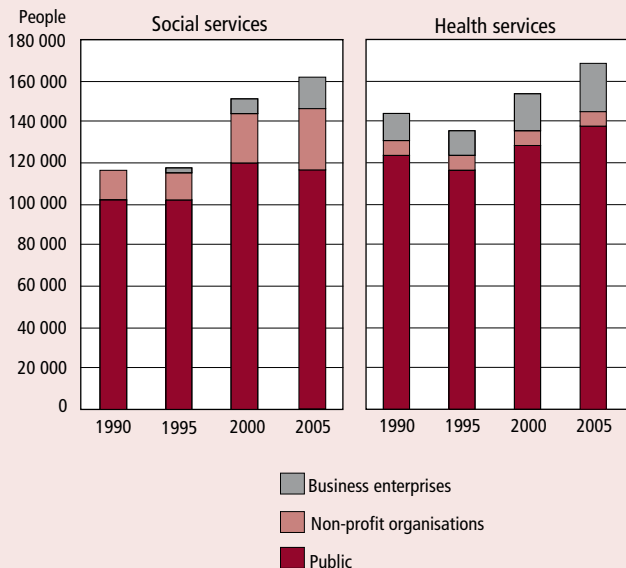
Private providers of social services²⁹

	2000	2007	Of which		
			Total	Non-profit organisations	Business enterprises
Number of operating units					
Main activity (Classification of Economic Activities 2002)					
Social services, total	2 664	3 909	1 640	2 249	20
Institutions for children and young people	259	568	58	509	1
Institutions for people with intellectual disabilities	8	6	4	2	-
Institutions for older people	53	42	33	9	-
Institutions for substance abusers	39	56	40	16	-
Sheltered housing and group homes	1 042	1 430	614	816	-
Mother-and-baby homes and shelters for battered family members	21	30	27	2	1
Other institutions and housing services	112	173	142	31	-
Child day care	609	658	363	280	15
Day centres	59	96	88	8	-
Home-help services	353	612	102	510	-
Sheltered work and vocational rehabilitation	39	67	60	6	1
Guidance and counselling centres	-	-	-	-	-
Community-based rehabilitation for substance abusers	23	36	34	2	-
Other social care	47	135	75	58	2
Personnel, 31 Dec, total	21 987	36 367	19 904	16 358	105

Private providers of health services³⁰

Number of service providers	2000	2001	2002	2003	2004	2005
Laboratory services	642	673	668	603	602	614
Doctor's surgeries	908	982	1 027	1 002	997	1 090
X-ray services	318	349	341	327	334	333
Physiotherapy	1 402	1 442	1 425	1 418	1 426	1 459
Occupational health care	660	671	681	630	668	780
Dental care	294	335	349	368	387	405
Personnel, 31 Dec, total	30 246	31 935	33 654	34 035	33 914	35 220

Personnel shares accounted for by public and private providers, 1990, 1995, 2000 and 2005



8 Social assistance

	1995	2005	2006	2007
Households and persons receiving social assistance ³¹				
Households	339 020	238 848	226 617	217 824
Persons	583 922	377 376	358 369	342 464
% of the population	11.4	7.2	6.8	6.5

Persons receiving social assistance by age, %

-17	27	26	26	26
18-29	30	27	26	25
30-39	17	14	14	14
40-49	15	15	15	15
50-64	8	14	15	16
65-	3	4	4	4

Households receiving social assistance by type of household, %

Lone dwellers	63	70	70	71
Couples without children	12	8	8	7
Two-parent families	15	10	10	9
Single-parent families	10	12	12	13

Households receiving social assistance by duration of primary social assistance, %

1-3 months	49	43	42	41
4-6 months	18	19	19	18
7-9 months	13	15	15	15
10-12 months	20	24	25	26

Gross expenditure on primary social assistance, current prices

EUR per month/household	265	330	346	373
-------------------------	-----	-----	-----	-----

9 Personnel

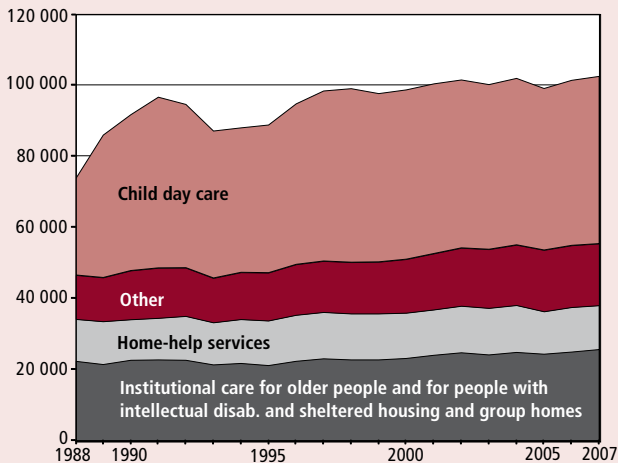
Municipal employees⁴ by activity

Man-years	1995	2000	2005	2007	%
					of social services and health care
Social and health services, total	195 900	211 000	221 700	225 730	
Social services, total	88 800	98 700	99 100	102 500	100
Social services with accomodation	23 800	25 900	27 500	28 590	28
Institutions for children and young people	1 860	2 060	2 270	2 170	2
Institutions for people with intellectual disabilities	3 330	3 560	3 900	3 950	4
Institutions for older people	15 030	14 690	13 000	13 600	13
Institutions for substance abusers	290	350	290	270	0
Sheltered housing and group homes	2 760	4 850	7 360	8 050	8
Other institutions and housing services	500	430	630	550	1
Community-based social services	65 000	72 800	71 600	73 900	72
Child day care	41 600	47 700	45 500	47 100	46
Day centres	870	1 060	1 390	1 630	1
Home-help services	12 590	12 790	12 000	12 400	12
Sheltered work and vocational rehabilitation	1 560	1 640	1 790	1 860	2
Community-based rehabilitation for substance abusers	390	360	430	470	0
Other social care	8 050	9 210	10 500	10 500	10
Health care	107 100	112 300	122 600	123 200	100
Hospital care proper	61 700	63 800	70 200	75 400	61
Medical practice	45 470	48 490	52 400	47 800	39

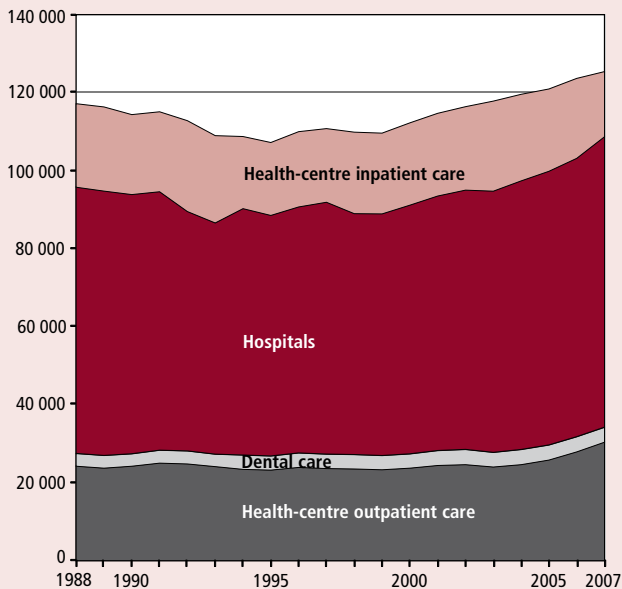
Municipal employees by occupational group/10 000 inhabitants

Number of employees	1995	2000	2005	2007
Medical doctors	19.3	21.5	22.1	23.1
Dentists	4.3	4.4	4.5	4.5
Social workers	8.6	9.1	9.8	10.2
Social work instructors	8.6	10.9	13.1	14.0
Nurses	43.6	54.2	69.1	73.1
Practical nurses	42.5	46.9	64.3	72.7
Assistant nurses and hospital ward assistants	42.0	37.8	33.4	31.9
Home care assistants/over-75s	486	416	252	199
Pre-primary education teaching professionals /children aged 1–6	217	272	303	342
Children's nurses and kindergarten assistants /children aged 1–6	394	487	488	539
Family childminders/children aged 1–6	456	485	439	428

Municipal employees in social care, 1988–2007



Municipal employees in health care, 1988–2007



10 Expenditure

Social protection expenditure by function, current prices, EUR million ³²

	1995	2000	2005	2006	2007
Sickness and health	6 144	7 637	10 528	11 139	11 683
Disability	4 394	4 467	5 262	5 369	5 570
Old age	8 480	10 233	13 697	14 531	15 451
Survivors	1 144	1 276	1 470	1 507	1 549
Family and children	3 920	4 007	4 705	4 848	5 101
Unemployment	4 220	3 372	3 770	3 622	3 430
Housing	441	467	437	439	431
Other	615	671	813	950	984
Administration	843	1 011	1 318	1 397	1 415
Total	30 200	33 142	42 001	43 802	45 615
% of GDP	31.5	25.1	26.7	26.2	25.4

Financing of social protection expenditure, % ³²

	1995	2000	2005	2006	2007
State	29.1	24.1	24.8	25.1	24.3
Municipalities	16.7	19.1	19.2	18.8	18.9
Employers	33.7	37.7	38.5	38.3	37.9
Insured persons	13.7	12.1	11.4	11.8	11.8
Other income	6.9	7.1	6.1	6.0	7.1
Total	100	100	100	100	100

Per capita social expenditure in EU and Nordic countries using Purchasing Power Parity, EUR ³³

	1995	2000	2004	2005	2006
Finland	4 971	5 596	6 704	6 885	7 215
Sweden	6 187	7 276	8 639	8 738	8 998
Norway	5 261	7 658	9 215	9 597	9 901
Denmark	6 162	7 232	8 354	8 563	8 601
Iceland	3 696	4 818	6 439	6 528	6 535
EU (15)	4 689	5 889	6 763	7 019	7 278

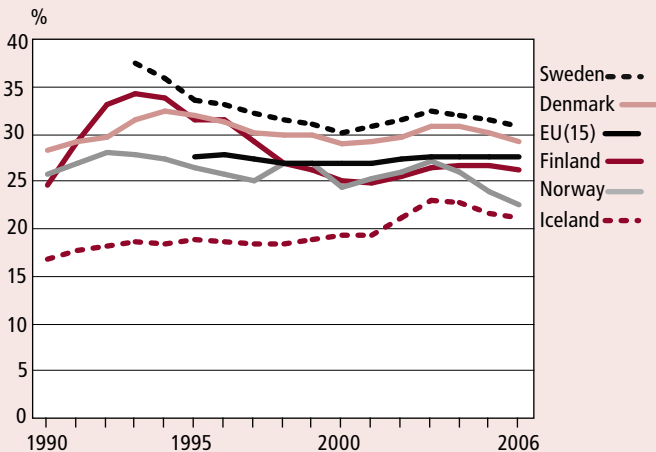
Health expenditure by function, current prices, EUR million³⁴

	1995	2000	2005	2006	2007
Specialised health care	2 470	3 055	4 324	4 590	4 853
Primary health care (excl. occupational, student and dental care)	1 465	1 735	2 380	2 516	2 651
Oral health care	438	559	771	803	867
Occupational and student health care	231	336	498	538	589
Institutional care for older people	481	543	693	715	749
Private health care reimbursed under the National Health Insurance	476	621	761	802	859
Other health care	161	169	220	215	226
Pharmaceuticals and other medical non-durables	956	1 408	2 061	1 986	2 073
Therapeutical appliances and other medical durables	205	264	345	375	392
Administration	226	265	348	359	381
Travels	100	133	187	207	221
Gross investment	346	466	691	786	848
Total	7 554	9 554	13 278	13 891	14 706
% of GDP	7.9	7.2	8.4	8.3	8.2

Financing of health expenditure, %³⁴

	1995	2000	2005	2006	2007
State	26.5	17.8	21.5	22.2	22.4
Municipalities	33.1	39.4	37.4	37.8	37.7
Social Insurance Institution	12.5	13.9	14.6	14.7	14.5
Relief funds	0.5	0.5	0.4	0.4	0.4
Private insurance	2.0	2.0	1.7	1.8	1.7
Households	21.8	22.3	20.1	19.0	18.9
Non-profit organisations serving households	1.5	1.5	1.5	1.5	1.5
Employers	2.2	2.6	2.8	2.7	2.9
Total	100	100	100	100	100

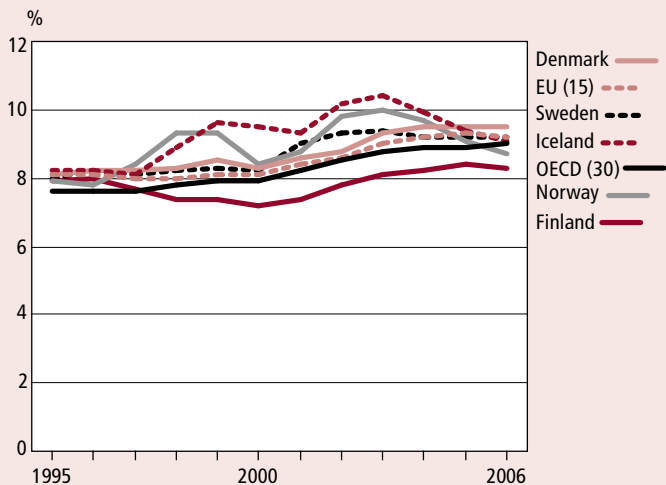
Social expenditure as a share of GDP in EU and Nordic countries, 1990–2006, %



Per capita health expenditure in OECD countries using Purchasing Power Parity, USD³⁵

	1995	2000	2004	2005	2006
Finland	1 440	1 794	2 412	2 523	2 668
Sweden	1 746	2 284	2 964	3 012	3 202
Norway	1 863	3 039	4 082	4 328	4 520
Denmark	1 871	2 379	3 057	3 179	3 362
Iceland	1 910	2 736	3 338	3 373	3 340
EU (15)	1 656	2 131	2 822	2 935	3 067
OECD (30)	1 530	1 954	2 591	2 699	2 915

Health care expenditure as a share of GDP in OECD countries, 1990–2006, %



Further information

National Institute for Health and Welfare (THL)
www.thl.fi

1 Population Statistics; Population; Population projection; Causes of death. OSF. Statistics Finland
<http://www.stat.fi>

2 Parturients, Deliveries and Births. OSF. THL

3 Helakorpi Satu, Prättälä Ritva, Uutela Antti.
Health Behaviour and Health among the Finnish Adult Population, Spring 2007
Publications of the National Public Health Institute B6/2008

4 Finances and Activities of Municipalities and Joint Municipal Boards. OSF. Statistics Finland
http://www.stat.fi/til/ktt/index_en.html

5 Child home care allowance and child allowance. The Social Insurance Institution of Finland
www.kela.fi

6 Child Welfare. OSF. THL

7 Child Maintenance and Custody. OSF. THL

8 Regular Home Care. OSF. THL

9 Institutional Care and Housing Services in Social Care. OSF. THL

10 Inpatient Health Care. OSF. THL

12 Alcoholic Beverage Consumption. OSF. STAKES; STTV (The National Product Control Agency)

13 Alcoholic Beverage Price Index. OSF. THL
www.stakes.fi/tilastot/alkoholitilanne

14 Adolescent Health and Lifestyle Survey. Tampere university
www.uta.fi/laitokset/tsph/tutkimus/kansanterveystiede/nttt.php

15 Drinking Habits Survey. 1992 and 2006. STAKES

16 Alcohol and Drug Studies 2004, 2005 and 2006. THL

17 ESPAD-the European School Survey Project on Alcohol and Other Drugs. THL
<http://www.espad.org/>

18 The European Monitoring Centre for Drugs and Drug Addiction (EMCDDA)
<http://www.emcdda.europa.eu>

19 Kontula O & Koskela K. (1992)
Huumeiden käyttö ja mielipiteet huumeista. Helsinki.

20 Partanen P. etc. (2007).
Yhteiskuntapolitiikka 72 (5), 553–561

21 A-Clinic Foundation
www.a-klinikka.fi

22 Päihdehuollon huumeasiakkaat 2006. STAKES

23 Costs of Alcohol and Drug Harm. 2007. STAKES

24 Survey of Substance Abuse cases in Health and Social Services 1999, 2003 and 2007. STAKES.

25 Health-Centre Outpatient Care.
OSF. THL

26 Outpatient Specialised Health Care.
OSF. THL

27 Induced Abortions. OSF. THL

28 Sterilisations. OSF. THL

29 Private Social Care Provision. OSF.
THL

30 Private Health Care Provision. OSF.
THL

31 Social Assistance. OSF. THL

32 Social Protection Expenditure. OSF.
THL

33 Eurostat, Dissemination database
2007

<http://www.ec.europa.eu/eurostat>

34 Health Expenditure and Financing.
OSF. THL

35 OECD Health Data, December 2008
www.oecd.org

Explanation of symbols:

- (-) Magnitude nil
- (..)Data unavailable or too uncertain for presentation
- (.) Data too inconsistent for presentation
- (b) Break in series
- (e) Projection
- (*) Preliminary data