

# Facts about Social Welfare and Health Care in Finland 2010



TO THE READER .....	3
GENERAL FACTS ABOUT FINLAND .....	4

## 1 POPULATION AND HEALTH BEHAVIOUR

Population by age .....	8
Vital statistics .....	8

## 2 SERVICES FOR CHILDREN AND FAMILIES

Child day care .....	12
Child allowance .....	13
Child welfare .....	13
Child maintenance and custody .....	13
Child maintenance allowance .....	14
Other services for children and families ....	14

## 3 CARE AND SERVICES FOR ELDERLY PEOPLE

Institutional care and housing services .....	16
Home-help services .....	17

## 4 SERVICES FOR PEOPLE WITH DISABILITIES

Services under the Services and Support for the Disabled Act .....	19
Institutional care and housing services .....	19
Other services .....	19

## 5 ALCOHOL AND DRUGS

Substance use .....	20
Services for substance abusers .....	22
Costs from alcohol and drugs .....	23

## 6 HEALTH CARE

Health centres .....	24
Specialised health care .....	24
Private health care .....	25
Periods of care and care days in inpatient health care .....	25
Treatment of mental disorders .....	26
Legally induced abortions .....	27
Sterilisations .....	27

## 7 PRIVATE SOCIAL AND HEALTH SERVICES

Private providers of social services .....	28
Private providers of health services .....	28

## 8 SOCIAL ASSISTANCE 30

## 9 PERSONNEL

Municipal employees by activity .....	31
Municipal employees by occupational group .....	32

## 10 EXPENDITURE

Social protection expenditure by function. ....	34
Financing of social expenditure .....	34
Per capita social expenditure in EU and Nordic countries .....	34
Health expenditure by function .....	35
Financing of health expenditure .....	35
Per capita health expenditure in OECD countries .....	36
Sources .....	38
Explanation of symbols .....	39

# TO THE READER

Facts about Social Welfare and Health Care in Finland includes information from the late 1980s to 2010 on health behaviour, social welfare services, alcohol and drugs, health care services, social assistance, personnel and expenditures. The data come primarily from THL's statistics, registers and surveys, but also from for instance the databases of Statistics Finland and the Social Insurance Institution. In addition, international information has been obtained among others from, OECD and Eurostat. More detailed statistical information on social and health care can be obtained from, among others, the Statistical Yearbook on Social Welfare and Health Care and the SOTKANet Indicator Bank ([www.sotkanet.fi](http://www.sotkanet.fi)).

Helsinki, August 2010

Salla Säkkinen  
Development Manager

THL  
National Institute for Health and Welfare  
Department of information  
P.O. Box 30, FI-00271 Helsinki  
Tel. +358 20 610 6000, fax +358 20 610 7497  
Internet: <http://www.thl.fi>

# Finland

**Population:** 5.4 million

**Capital:** Helsinki

(584 000 inhabitants,  
the metropolitan area  
about one million)

**Official languages 2009:**

Finnish (90.7 %)

Swedish (5.4 %)

**Currency unit:** Euro

**Total area<sup>1</sup>** 390 920 km<sup>2</sup>

**Land boundary<sup>1</sup>**

With Sweden 614 km

With Norway 736 km

With Russia 1 340 km

Boundary of territorial  
waters 1 250 km

**Population per km<sup>2</sup>  
of land area 2010**

17.5

**Population in urban  
municipalities 2008, %**

67.9



Weather conditions<sup>2</sup>

	Helsinki	Sodankylä (Lapland)
Mean temperature in 2010		
February	−8.1 C°	−17.5 C°
July	21.7 C°	15.8 C°
Mean temperature in 1971–2000	5.6 C°	−0.8 C°
Number of days with precipitation in 2009	106	106

Municipalities by number of inhabitants 2010<sup>3</sup>

0–1 999	47
2 000–5 999	129
6 000–9 999	64
10 000–19 999	47
20 000–39 999	32
40 000–99 999	15
100 000–	8
Total	342

## Population aged 15 and over with an educational qualification %, 2008 (31 Dec)

Total	65.5
Tertiary education	26.9
Upper secondary education	38.6

## Rate of taxation 2008, % of GDP 42.8\*

## Unemployment 2009, mean

Unemployed (total, pop. aged 15–74)	221 000
Unemployment rate, %	8.2
Males	8.9
Females	7.6
Population aged 15–24	21.5

## Women's labour force participation 2009, % of population aged 15–74 59.8



Sources: <sup>1</sup> National Land Survey of Finland, [www.maanmittauslaitos.fi/en](http://www.maanmittauslaitos.fi/en)

<sup>2</sup> Finnish Meteorological Institute, [www.fmi.fi/en](http://www.fmi.fi/en)

<sup>3</sup> Association of Finnish Local and Regional Authorities, [www.localfinland.fi](http://www.localfinland.fi)

If not otherwise indicated, the source of data is Statistics Finland, [www.stat.fi](http://www.stat.fi)

# Social protection in Finland

The constitution of Finland guarantees the basic economic, social and educational rights of all people living in the country.

Social protection is made up of preventive social and health care, social welfare and health services, and sickness, disability, unemployment, old age and other benefits.

Social protection aims to safeguard the working and living environment of the population, and ensure good standards of health and work ability, sufficient income, services, and social security, at different stages of life. Practically every household at some point receives some form of income transfer or uses social and health services.

The Finnish social protection system is structured in line with the principles of the Nordic welfare model. The main features of the Nordic welfare state are:

- the principle of universality (the right of all to a basic level of social protection regardless of where they live, their profession or economic position)
- earnings-related benefits for employed persons
- a strong public sector
- a system based on tax funding and contributions
- equal treatment

The public sector plays a central role in the development of social protection. Services and income protection are guided by legislation. Municipalities have the responsibility to arrange social and health services for their residents. Municipalities can arrange these services by themselves or purchase them from private service providers.

# Social spending and funding

Social spending mainly consists of expenditure on social welfare and health services, pensions, sickness, unemployment, and family and housing benefits.

Finland's social spending as a proportion of GDP is below the EU average. In 2008, it stood at 26.3 per cent of GDP or EUR 48.6 billion.

Services are mainly funded by taxation. Client payments cover about 10 per cent of the costs of social and health services. Minimum benefits are mainly tax-financed while earnings-related benefits are financed by employer and employee contributions.

# 1 Population and health behaviour

## Population by age<sup>1</sup>

	1995	2005	2009	2009	2020e
	Females				
0–6	454 940	400 107	414 405	202 815	440 102
7–14	516 830	506 797	473 918	231 688	497 229
15–24	632 169	654 878	659 108	322 537	605 777
25–49	1 952 541	1 744 795	1 730 467	847 699	1 730 706
50–64	827 929	1 107 838	1 163 088	586 518	1 071 981
65–74	432 277	448 198	483 362	259 534	719 024
75–84	233 122	304 378	318 388	194 965	406 582
85–	67 018	88 589	108 691	80 604	164 537
Total population	5 116 826	5 255 580	5 351 427	2 726 360	5 635 938
Females, %	51.3	51.1	50.9	50.9	50.7
Population in urban areas, %	58.2	62.9	68.1	68.9	70.0

## Population by age, %

	1995	2005	2009	2009	2020e
	Females				
0–6	8.9	7.6	7.7	7.4	7.8
7–64	76.8	76.4	75.2	72.9	69.3
65–	14.3	16.0	17.0	19.6	22.9
75–	5.9	7.5	8.0	10.1	10.0

## Vital statistics<sup>1</sup>

	1987	1995	2000	2005	2008
Births	60 069	63 125	56 771	57 822	59 808
Live births	59 742	62 823	56 541	57 636	59 617
/1000, mean population	12.1	12.3	10.9	11.0	11.2
Stillbirths	327	302	230	186	191
/1000 births	5.4	4.8	4.0	3.2	3.2
Perinatal deaths	522	435	329	288	288
/1000 births	8.8	6.9	5.8	5.0	4.8
Infant deaths	355	245	206	174	160*
/1000 live births	5.9	3.9	3.6	3.0	2.7*

	1987	1995	2000	2005	2008
Deaths	47 988	48 280	49 339	47 928	49 094
/1000, mean population	9.7	9.5	9.4	9.1	9.3
Males	24 290	24 251	24 053	24 057	24 457
Females	23 698	25 290	25 286	23 871	24 637
Immigrants	9 142	12 222	16 895	21 335	29 114
Emigrants	8 475	8 957	14 311	12 369	13 657
Net immigration	667	3 265	2 584	8 986	15 457
/1000, mean population	0.1	0.6	0.5	1.7	2.9
Population growth	12 545	18 072	9 813	18 969	25 830
/1000, mean population	2.5	3.5	1.9	3.6	4.9
General fertility rate	47.6	49.7	46.6	49.0	50.8
Total fertility rate	1.59	1.81	1.73	1.80	1.85

### Parturients<sup>2</sup>

	1987	1995	2000	2005	2008
Average age, years	28.9	29.7	29.9	30.0	30.1
Under-20s, %	3.2	2.5	2.9	2.8	2.4
Over-35s, %	13.3	15.1	18.4	19.0	18.1
Primiparas, %	39.8	39.1	40.9	42.6	42.0
Married or co-habiting, %	92.8	89.9	88.1	93.3	92.2
Has smoked during pregnancy, %	15.2	14.7	14.4	14.6	14.7

### Newborns<sup>2</sup>

	1987	1995	2000	2005	2008
Average weight, g	3 548	3 539	3 515	3 505	3 491
Average length, cm	50.2	50.2	50.1	50.0	50.0
Premature birth (< 37 weeks), %	5.6	5.7	6.3	5.7	5.7
Low birth weight (< 2500 g), %	3.9	4.3	4.6	4.3	4.3
Twins or triplets, %	2.2	2.9	3.2	3.0	2.9
Discharged within 7 days, %	75.9	91.8	92.3	92.2	93.4

### Maternal deaths<sup>1, 2</sup>

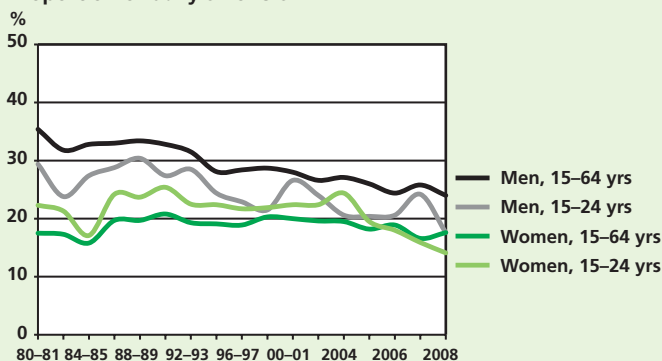
	1991–1995	1996–2000	2001–2005	2006–2008
Maternal deaths/year	3.2	2.6	3.6	3.3
/100 000 live births	5.0	4.5	6.3	5.6

Life expectancy<sup>1</sup>

	1990		2006		2008	
	Males	Females	Males	Females	Males	Females
At age 0	70.7	78.8	75.8	82.8	76.3	83.0
At age 55	20.6	26.2	24.4	29.7	24.9	29.8

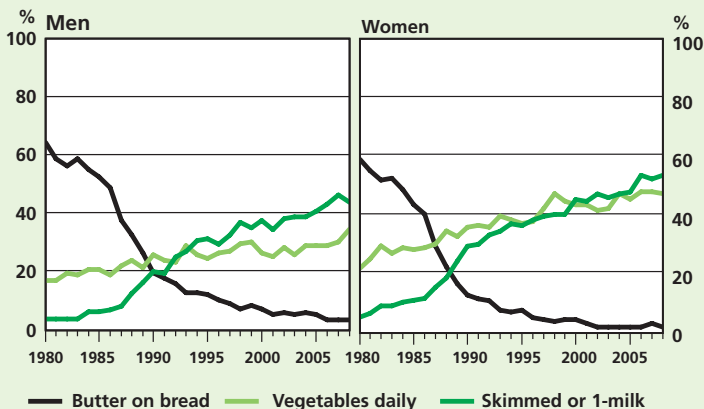
Causes of death<sup>1</sup>

	1990		2006		2008	
	Deaths /100 000 inhabitants		Deaths /100 000 inhabitants		Deaths /100 000 inhabitants	
Diseases of the circulatory system	23 988	499.5	19 878	291.9	20 144	278.3
Neoplasms	10 086	204.9	11 046	168.4	11 214	163.9
Diseases of the respiratory system	3 750	79.8	2 126	31.4	1 979	27.9
Diseases of the digestive system	1 317	27.6	1 307	19.2	1 232	17.2
Alcohol-related diseases	1 161	22.5	2 020	32.2	2 136	33.4
Accidental injuries and violence	4 351	87.6	3 762	63.7	3 726	61.5
- of which accidental injuries	2 483	50.6	2 510	41.0	2 470	38.9
- of which suicides	1 520	30.0	1 062	19.3	1 033	18.6
Total	50 091	1036.8	48 106	725.1	49 090	702.4

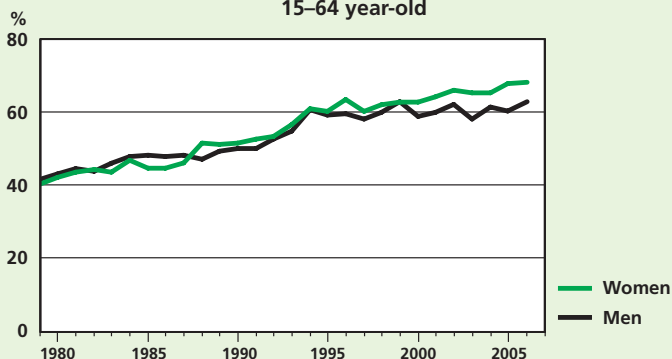
Proportion of daily smokers<sup>3</sup>

Eating habits among the adult population<sup>3</sup>

15–64-year-old

Proportion of people pursuing leisure-time physical activities at least 2–3 times a week<sup>3</sup>

15–64 year-old



# 2 Services for children and families

## Child day care<sup>4</sup>

	1995	2000	2008	2009
<b>Children in day care, total 31 Dec.</b>	..	214 547	219 198	217 950
Municipal day care	189 918	200 487	201 550	200 672
Municipal day-care centres	115 583	121 676	140 644	144 371
Private outsourced day-care centres	8 854	10 181	9 595	9 677
Family day care	65 481	68 630	51 311	46 624
Private day care	..	14 060	17 648	17 278
<b>Children in day care, % 1–6-year-olds</b>	..	59.1	62.7	61.6
Municipal day care	48.4	55.2	57.7	56.7
Municipal day-care centres	29.5	33.5	40.3	40.8
Private outsourced day-care centres	2.3	2.8	2.7	2.7
Family day care	16.7	18.9	14.7	13.2
Private day care	..	3.9	5.1	4.9

## Preschool education

Children receiving preschool education, total	..	58 654	56 209	57 727
---	----	--------	--------	--------

## Supervised play groups

Average daily attendance in supervised play groups	24 388	27 287	19 546	19 462
--	--------	--------	--------	--------

## Home-care allowance<sup>5</sup>

	1995	2000	2008	2009
Recipient families, total 31 Dec	..	72 546	64 555	65 854
Recipient families/1000 children aged 0–2	..	424	362	366
Children receiving home-care allowance, 31 Dec	..	111 595	97 687	97 617
Home-care allowance paid, EUR million	..	315.3	288.8	302.7

## Child allowance<sup>5</sup>

	1995	2000	2008	2009
Children receiving child allowance, 31 Dec	1 097 449	1 063 680	1 021 275	1 016 865
Families receiving child allowance, 31 Dec	614 620	586 834	564 259	562 425
Child allowances paid, EUR million	1 474.7	1 387.1	1 424.9	1 436.9

## Child welfare<sup>6</sup>

	1995	2000	2008	2009
Children and young people in community care interventions,	30 686	49 351	67 347	..
% of all under-18s	2.6	4.3	6.2	..

Children and young people placed outside the home, total	10 738	12 671	16 608	..
Foster care	5 131	5 596	5 468	..
Residential care	3 891	4 967	8 827	..
Other	1 716	2 108	2 313	..
Placements, 0–17-year-olds, % of under-18s	0.8	0.9	1.3	..

Children and young people in care, based on the year's last placement decision	6 391	7 329	10 716	..
New cases	1 197	1 663	2 977	..

## Child maintenance and custody<sup>7.1</sup>

	1995	2000	2008	2009
<b>Agreements confirmed by the Social Welfare Board on</b>				
- custody, right of access and residence of child	30 911	36 727	42 792	43 711
- maintenance payments	26 808	34 316	35 693	39 643

## Child maintenance allowance<sup>7.2</sup>

	1995	2000	2008	2009
Children receiving maintenance payments 31.12., total	103 101	107 962	93 703	95 899
% of all under-18s	8.8	9.5	8.6	8.8

### Maintenance allowances and recovered maintenance payments

Maintenance allowances paid, EUR 1000	119 520	139 439	140 517	151 357
Maintenance payments recovered for children, EUR 1000	15 353	9 558	6 683	6 173
Total, EUR 1000	134 873	148 997	147 200	157 530
Total EUR per child	1 308	1 380	1 571	1 643

## Other services for children and families<sup>4</sup>

	1995	2000	2008	2009
Families with children receiving municipal home help, total	29 992	18 049	9 404	8 961
% of all families with children under 18	4.7	2.9	1.6	1.5

### Child guidance and family counselling

Clients during year	66 917	72 142	77 562	76 646
Children and young people as clients, total	..	30 091	35 294	34 979
% of all under-18s	..	2.7	3.2	3.2
Adults as clients, total	..	42 051	42 268	41 667

### Mother-and-baby homes

Clients during year	..	540	818	955
---------------------	----	-----	-----	-----

### Shelters for battered family members

Clients during year	..	3 501	3 668	3 492
---------------------	----	-------	-------	-------



# 3 Care and services for elderly people

	1995	2000	2007	2008
Living at home, % of over-75s	..	89.8	89.3	89.4

## Institutional care and housing services

### Residential homes for elderly people<sup>9</sup>

Clients, 31 Dec, total	23 088	21 325	19 016	18 138
Over-65s	22 546	20 630	18 515	17 636
% of over-65s	3.1	2.7	2.1	2.0
Over-75s	19 535	18 093	16 677	15 842
% of over-75s	6.5	5.3	4.0	3.8
Care days during year, total	8 571 760	7 856 748	6 992 464	6 733 662

### Inpatient care in health centres<sup>10</sup>

Long-term clients over 65, 31 Dec	12 255	12 164	10 607	10 106
% of over-65s	1.7	1.6	1.2	1.1
Care days during year, over-65s	6 375 905	6 865 167	6 462 984	6 343 381
Long-term clients over 75, 31 Dec	10 312	10 360	9 264	8 804
% of over-75-s	3.4	3.0	2.2	2.1
Care days during year, over-75s	5 216 899	5 677 595	5 491 894	5 380 785

### Ordinary sheltered housing for elderly people<sup>9</sup>

Over-65s	..	10 007	8 419	7 824
% of over-65s	..	1.3	1.0	0.9

### Sheltered housing with 24-hour assistance<sup>9</sup>

Clients, 31 Dec, total	..	7 302	20 771	22 867
Over-65s	..	6 799	20 026	22 047
% of over-65s	..	0.9	2.3	2.5
Over-75s	..	5 857	17 472	19 211
% of over-75s	..	1.7	4.2	4.6

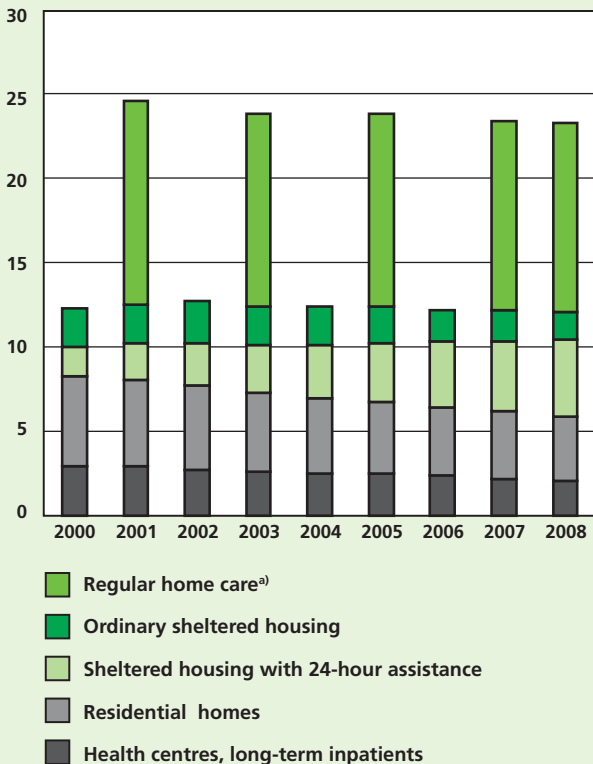
## Home-help services

	1995	2000	2007	2008
<b>Regular home care <sup>8</sup></b>				
<b>(home-help services and home nursing)</b>				
Clients over 65, 30 Nov	53 293	52 353 <sup>a)</sup>	55 603	55 763
% of over-65s	7.3	6.6 <sup>a)</sup>	6.4	6.3
Clients over-75s, 30 Nov	41 294	42 231 <sup>a)</sup>	46 739	46 923
% of over-75s	13.8	12.1 <sup>a)</sup>	11.3	11.2
<b>Support for informal care <sup>4</sup></b>				
Clients over 65 / year	11 294	14 355	21 765	22 981
% of over-65s	1.5	1.8	2.5	2.6
Clients over-75s / year	8 041	10 300	15 983	17 006
% of over-75s	2.7	3.0	3.9	4.1
<b>Households with older persons receiving home help during year <sup>4</sup></b>				
% of over-65s	11.8	10.7	10.6	10.8
<b>Clients over 65 in support services during year <sup>4</sup></b>				
% of over-65s	13.4	13.5	13.1	13.1

a) year 2001

## Coverage of care and services for older people 2000–2008

75+ cits, % of 75+ population



a) Up to 2006, the count of regular home-care clients was performed every other year.

# 4 Services for people with disabilities

## Services under the Services and Support for the Disabled Act<sup>4</sup>

	1995	2000	2007	2008
<b>Service recipients during year</b>				
Transport services for seriously disabled people	45 839	66 568	86 726	88 539
Interpreter services	2 808	3 137	3 961	4 024
Sheltered housing for seriously disabled people	..	1 894	3 375	3 525
Housing alterations	..	..	8 599	8 587
Personal assistance	1 835	2 817	5 034	5 435

## Institutional care and housing services<sup>4</sup>

	1995	2000	2007	2008
<b>Clients 31 Dec</b>				
Institutions for people with intellectual disabilities <sup>a)</sup>	3 699	2 960	2 589	2 434
Housing for people with intellectual disabilities, 24-hour assistance	..	3 344	..	..
Housing for people with intellectual disabilities, part-time assistance	..	2 476	..	..
<b>Group housing services for people with disabilities</b>				
- staff available at night	..	..	5 699	5 960
- no staff available at night	..	..	2 588	2 540
Family care for people with intellectual disabilities <sup>a)</sup>	1 304	1 270	1 262	1 269

## Other services<sup>4</sup>

	1995	2000	2007	2008
<b>Clients 31 Dec</b>				
Sheltered work centres for people with disabilities	3 151	3 301	..	..
Day and sheltered work centres for people with intellectual disabilities	9 499	10 929	..	..
Activities to support employment of disabled people	..	..	3 148	2 798
Day and sheltered work centres for people with various disabilities	..	..	13 435	14 415

## Clients under 65 receiving support for informal care

during year	6 957	8 090	11 221	11 959
-------------	-------	-------	--------	--------

a) From 2006 onwards, figures on institutional and family care include not only people with intellectual disabilities but also other disabled people.

# 5 Alcohol and drugs

## Substance use<sup>11–15</sup>

	1990	2005	2008	2009
--	------	------	------	------

### Consumption of alcoholic beverages, 100% alcohol per capita, litres

Total consumption	8.9	10.5	10.4	10.2
Undocumented consumption	1.2	2.3	1.9	1.9
Documented consumption	7.7	8.2	8.5	8.3
Consumption of alcoholic beverages in litres per capita:				
Spirits	7.7	6.6	6.4	5.9
Wines	6.2	10.9	12.1	12.1
Cider	0.3	10.1	10.8	9.6
Long drinks	3.7	4.8	8.0	8.9
Beer	81.6	82.5	83.8	82.6

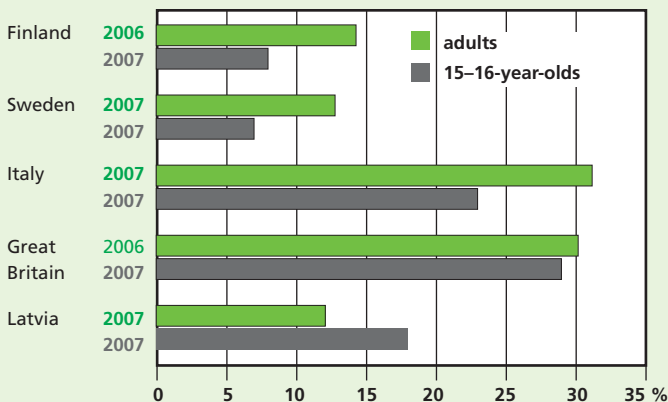
### Real price indices for documented consumption of alcoholic beverages, 2000=100

Total	98	91	90	96
Spirits	106	77	81	87
Wines	101	96	95	99
Beer	107	96	93	100

### Intoxicated at least once a month, %

	1995	2003	2007
14–18-year-olds	17	22	19
	1992	2004*	2006*
15–69-year-olds	17	13	11
Males	27	18	17
Females	8	7	5

## Experimental or habitual use of cannabis in selected EU countries<sup>15-17</sup>



## Experimental or habitual use of cannabis, %<sup>15, 18</sup>

		Age group			
		15-24	25-34	35-69	Totalt
Males	1992	17	11	3	6
	2006	21	32	10	15
Females	1992	7	9	2	4
	2006	17	19	8	11

## Estimated population shares of amphetamine and opiate users, 2005, %<sup>19</sup>

	Helsinki metropolitan area	Whole country
Amphetamine users	0.7-1.0	0.4-0.7
Opiate users	0.2-0.4	0.1-0.2

## Services for substance abuser <sup>4, 9, 10, 20</sup>

	1997	2005	2007	2008
<b>Clients during year</b>				
A-clinics	39 166	42 775	45 976	47 359
/1000 inhabitants	7.6	8.1	8.7	8.9
Youth clinics	3 702	5 939	5 281	5 764
/1000 inhabitants	0.7	1.0	1.0	1.1
Housing service units	4 066	3 809	3 892	4 015
/1000 inhabitants	0.8	0.7	0.7	0.8
Overnight shelters	1 311	1 291	1 629	2 148
/1000 inhabitants	0.3	0.2	0.3	0.4
<b>Periods of care during year</b>				
Detoxification and rehabilitation centres	21 229	22 389	22 278	22 757
/1000 inhabitants	4.1	4.3	4.2	4.3
Alcohol-related hospital care	33 335	36 929	37 624	37 607
/1000 inhabitants	6.6	7.0	7.1	7.1
Drugs-related hospital care	7 128	8 755	9 000	9 508
/1000 inhabitants	1.4	1.7	1.7	1.8

Year 2008	A-clinics, youth clinics	Detoxification and rehabilitation centres	Hospital inpatient wards		
	Clients	Periods of care	Periods of care, primary diagnosis	<i>alcohol</i>	<i>drug medicine and the like</i>
%					
Males	68.5	74.6	79.9	63.7	50.0
Females	31.5	25.4	20.1	36.3	50.0
–19	6.8	2.9	2.5	7.1	12.3
20–29	19.3	15.5	4.5	46.9	27.1
30–39	19.0	18.9	9.7	24.5	17.8
40–49	22.9	28.8	23.8	10.9	19.0
50–59	21.7	25.5	34.2	5.9	12.7
60–	10.3	8.5	25.3	4.7	11.0
Total	53 123	22 757	26 157	1 308	5 360
of which 25–64-year-olds/1000 persons in the same age group	10.2	6.9	7.5	0.3	1.2

### Primary reason for seeking drug treatment among clients in services for substance abusers <sup>21</sup>

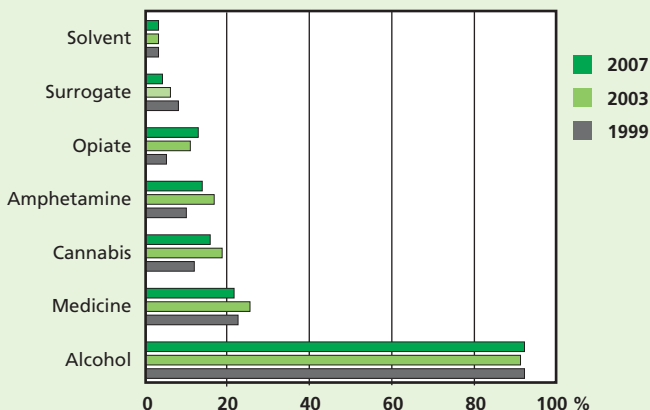
	1998	2004	2005	2006	2007	2008
%						
Opiates	21	37	37	41	46	50
Stimulants	35	26	22	21	19	16
Cannabis	17	15	14	14	10	9
Hypnotics, sedatives	5	6	7	7	7	7
Alcohol (mixed use)	19	18	19	17	17	18

### Costs from alcohol and drugs <sup>22</sup>

Costs of the harm done by alcohol and drugs by main category, 2007, EUR million

	Alcohol	Drugs and medicine abuse
<b>Direct costs</b>	818	246
Health costs	206	38
Social costs	189	81
Crime control and security	284	65
Damage to property, surveillance, research, substance abuse prevention	138	62
<b>Indirect costs</b>	4 611	782

### Substance abusers in social and health services in 1999, 2003 and 2007 <sup>23</sup>



# 6 Health care

## Health centres

### Primary health care <sup>24, 10</sup>

	1995	2000	2007	2008
Health-care visits, total	23 759 097	25 130 483	25 035 672	25 501 758
/1000 inhabitants	4 652	4 850	4 723	4 788
Visits to prenatal clinics	1 035 447	929 709	1 048 476	1 026 793
Visits to child-health clinics	1 474 894	1 343 243	1 316 441	1 373 471
Visits to school and student health units	2 169 292	1 944 646	1 909 213	1 987 703
Visits to occupational health care	650 545	956 708	1 144 414	1 067 058
Home-nursing visits	3 391 974	3 447 083	3 872 128	4 077 653
Outpatient visits in mental health services	214 802	505 689	675 202	658 655
Oral health care visits, total	4 786 196	4 848 889	4 981 064	5 030 761
/1000 inhabitants	937	936	940	945

### Institutional care <sup>10</sup>

Periods of inpatient care	198 937	251 697	240 794	249 187
/1000 inhabitants	39	49	45	47
Care days	7 003 030	7 563 714	7 166 535	7 155 110
/1000 inhabitants	1 371	1 461	1 335	1 347

## Specialised health care <sup>25, 10</sup>

	1995	2000	2007	2008
Outpatient visits, total	5 852 144	6 197 702	6 945 597	7 396 472
/1000 inhabitants	1 130	1 196	1 310	1 389

### Institutional care <sup>10</sup>

Periods of inpatient care	1 073 603	1 098 746	1 053 127	1 044 592
/1000 inhabitants	210	212	198	197
Care days	7 973 684	6 494 956	5 694 967	5 402 915
/1000 inhabitants	1 561	1 255	1 072	1 016

## Private health care <sup>10, 29</sup>

	1996	2005	2006	2007	2008
<b>Outpatient visits, total, million</b>	13.6	16.6	16.7	16.7	.
/1000 inhabitants	2 651	3 235	3 153	3 167	.
<b>Periods of care</b>	49 555	72 964	75 252	73 290	77 065
/1000 inhabitants	10	14	14	14	15
<b>Care days, total</b>	499 000	512 928	556 360	523 724	541 785
/1000 inhabitants	97	98	106	99	102

## Periods of care and care days in inpatient health care <sup>10</sup>

Main diagnostic group	Periods of care, total		Periods of care /1000 inhabitants		Care days
ICD-10	1996	2008	1996	2008	2008
Infectious and parasitic diseases	39 561	42 836	7.7	8.1	314 815
Neoplasms	121 296	118 946	23.7	22.4	801 440
Diseases of blood and blood-forming organs	11 543	10 926	2.3	2.1	55 142
Endocrine, nutritional and metabolic diseases	29 018	21 111	5.7	4.0	210 771
Mental disorders	92 012	84 261	18.0	15.9	3 551 576
Diseases of the nervous system	52 929	55 317	10.3	10.4	1 085 475
Diseases of the eye	43 401	56 480	8.5	10.6	74 019
Diseases of the ear	17 264	16 767	3.4	3.1	28 655
Diseases of the circulatory system	197 884	172 050	38.6	32.4	2 338 919
Diseases of the respiratory system	129 731	93 229	25.3	17.5	666 363
Diseases of the digestive system	97 332	95 019	19.0	17.9	418 716
Diseases of the skin and subcutaneous tissue	17 361	12 186	3.4	2.3	84 680
Diseases of the musculoskeletal system and connective tissue	117 704	122 231	23.0	23.0	578 216
Diseases of the genitourinary system	72 133	68 053	14.1	12.8	328 343
Pregnancy, childbirth and the puerperium	90 450	77 417	17.7	14.6	258 764

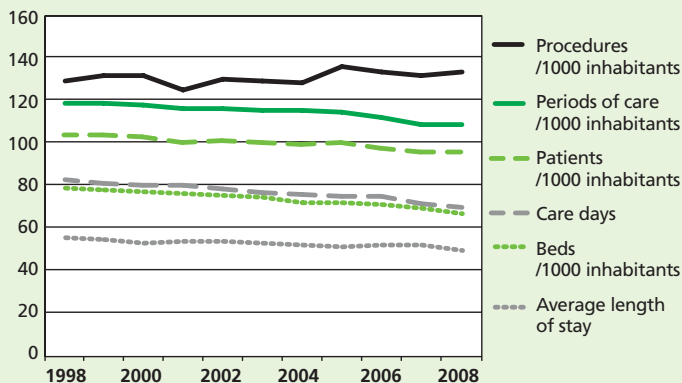
Main diagnostic group ICD-10	Periods of care, total		Periods of care /1000 inhabitants		Care days
	1996	2008	1996	2008	2008
Certain conditions originating in the perinatal period	7 339	8 699	1.4	1.6	74 362
Congenital anomalies	13 973	10 489	2.7	2.0	48 330
Symptoms, signs and ill-defined conditions not elsewhere classified	86 014	76 149	16.8	14.3	335 854
Injury and poisoning	107 602	125 482	21.0	23.6	1 032 806
Factors influencing health status	32 107	25 838	6.3	4.9	25 838
Total	1 377 003	1 293 779	268.7	243.5	12 458 025

Specific disease groups:	Periods of care, total		Periods of care /1000 inhabitants		Care days	
	1996	2008	1996	2008	1996	2008
Diabetes	20 262	11 420	4.0	2.1	12.8	13.5
Ischemic heart diseases	64 092	43 063	12.5	8.1	11.5	12.0
Cerebrovascular diseases	32 738	31 632	6.4	6.0	37.2	34.2
Asthma	16 122	5 940	3.1	1.1	5.4	6.4
Schizophrenias	21 120	17 991	4.1	3.4	108.9	53.8

## Treatment of mental disorders<sup>10, 25</sup>

	1995	2000	2006	2007	2008
<b>Outpatient visits, total</b>	1 433 678	1 636 331	2 061 688	2 140 570	2 187 689
/1000 inhabitants	281	316	391	404	411
<b>Periods of care</b>	68 912	82 964	72 914	71 601	70 440
/1000 inhabitants	13.5	16.0	13.8	13.5	13.3
<b>Care days, total</b>	2 554 096	2 282 686	2 085 518	1 991 823	1 917 070
/1000 inhabitants	500.0	441.0	395.2	375.8	360.8

## Institutional health care 1998–2008, index 1988 = 100<sup>10</sup>



## Legally induced abortions<sup>26</sup>

	1995	2005	2006	2007	2008
Abortions	9 872	10 974	10 694	10 590	10 423
/1000 females aged 15–49	7.8	9.3	9.1	9.0	8.9
Abortions among under-20s	1 766	2 336	2 238	2 169	2 070
/1000 females aged 15–19	11.0	15.0	14.2	13.5	12.7
Abortions before 12th week of gestation, %	94.0	92.7	92.6	92.5	92.8
Drug-induced abortions, %	-	52.9	57.4	63.6	69.5

## Sterilisations<sup>27</sup>

	1995	2005	2006	2007	2008
Sterilisations	11 313	6 925	5 299	4 731	4 450
Males	792	1 822	1 475	1 406	1 457
/1000 males aged 25–54	0.7	1.7	1.4	1.3	1.4
Females	10 521	5 103	3 824	3 325	2 993
/1000 females aged 25–54	9.4	4.8	3.6	3.2	2.9

# 7 Private social and health services

## Private providers of social services<sup>28</sup>

	2000	2008	Of which		
		Total	Non-profit organisations	Business enterprises	Others
<b>Number of operating units</b>					
Main activity (Classification of Economic Activities 2002)					
<b>Social services, total</b>	2 664	4 064	1 594	2 448	22
Institutions for children and young people	259	607	58	548	1
Institutions for people with intellectual disabilities	8	8	5	3	-
Institutions for older people	53	44	31	13	-
Institutions for substance abusers	39	56	40	16	-
Sheltered housing and group homes	1 042	1 470	577	893	-
Mother-and-baby homes and shelters for battered family members	21	30	27	3	-
Other institutions and housing services	112	183	139	42	2
Child day care	609	667	360	291	16
Day centres	59	98	86	12	-
Home-help services	353	645	107	538	-
Sheltered work and vocational rehabilitation	39	67	57	9	1
Guidance and counselling centres	-	-	-	-	-
Community-based rehabilitation for substance abusers	23	38	36	2	-
Other social care	47	151	71	78	2
<b>Personnel, 31 Dec, total</b>	<b>21 987</b>	<b>38 344</b>	<b>19 207</b>	<b>19 012</b>	<b>125</b>

## Private providers of health services<sup>29</sup>

Number of service providers	2000	2001	2002	2003	2004	2005
Laboratory services	642	673	668	603	602	614
Doctor's surgeries	908	982	1 027	1 002	997	1 090
X-ray services	318	349	341	327	334	333
Physiotherapy	1 402	1 442	1 425	1 418	1 426	1 459
Occupational health care	660	671	681	630	668	780
Dental care	294	335	349	368	387	405
<b>Personnel, 31 Dec, total</b>	<b>30 246</b>	<b>31 935</b>	<b>33 654</b>	<b>34 035</b>	<b>33 914</b>	<b>35 220</b>



# 8 Social assistance

	1995	2006	2007	2008
--	------	------	------	------

## Households and persons receiving social assistance <sup>30</sup>

Households	339 020	226 617	217 842	215 570
Persons	583 922	358 369	342 492	339 394
% of the population	11.4	6.8	6.5	6.4

## Persons receiving social assistance by age, %

-17	27	26	26	26
18-29	30	26	25	25
30-39	17	14	14	14
40-49	15	15	15	15
50-64	8	15	16	16
65-	3	4	4	4

## Households receiving social assistance by type of household, %

Lone dwellers	63	70	71	71
Couples without children	12	8	7	7
Two-parent families	15	10	9	9
Single-parent families	10	12	13	13

## Households receiving social assistance by duration of primary social assistance, %

1-3 months	49	42	41	41
4-6 months	18	19	18	18
7-9 months	13	15	15	14
10-12 months	20	25	26	27

## Gross expenditure on primary social assistance, current prices

EUR per month/household	265	346	373	400
-------------------------	-----	-----	-----	-----

# 9 Personnel

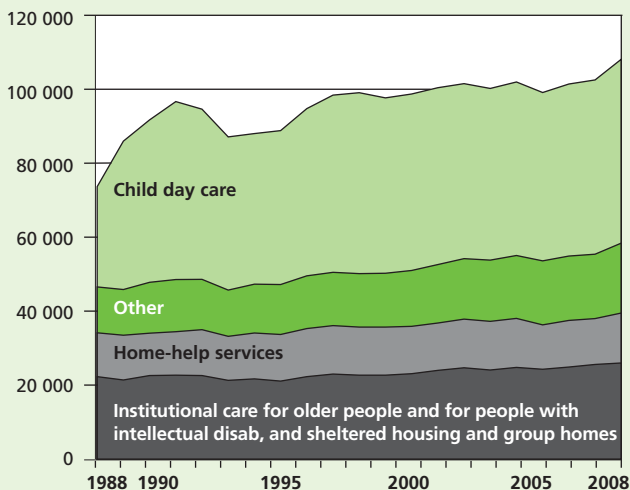
## Municipal employees<sup>4</sup> by activity

Man-years	1995	2000	2005	2008	%
					of social services and health care
<b>Social and health services, total</b>	<b>195 900</b>	<b>211 000</b>	<b>221 700</b>	<b>233 260</b>	
<b>Social services, total</b>	<b>88 800</b>	<b>98 700</b>	<b>99 100</b>	<b>108 120</b>	<b>100</b>
<b>Social services with accomodation</b>	<b>23 800</b>	<b>25 900</b>	<b>27 500</b>	<b>29 150</b>	<b>27</b>
Institutions for children and young people	1 860	2 060	2 270	2 300	2
Institutions for people with intellectual disabilities	3 330	3 560	3 900	4 050	4
Institutions for older people	15 030	14 690	13 000	13 040	12
Institutions for substance abusers	290	350	290	290	0
Sheltered housing and group homes	2 760	4 850	7 360	8 880	8
Other institutions and housing services	500	430	630	590	1
<b>Community-based social services</b>	<b>65 000</b>	<b>72 800</b>	<b>71 600</b>	<b>78 970</b>	<b>73</b>
Child day care	41 600	47 700	45 500	49 730	46
Day centres	870	1 060	1 390	1 800	2
Home-help services	12 590	12 790	12 000	13 480	12
Sheltered work and vocational rehabilitation	1 560	1 640	1 790	1 830	2
Community-based rehabilitation for substance abusers	390	360	430	580	1
Other social care	8 050	9 210	10 500	11 540	11
<b>Health care</b>	<b>107 100</b>	<b>112 300</b>	<b>122 600</b>	<b>125 130</b>	<b>100</b>
Hospital care proper	61 700	63 800	70 200	74 250	59
Medical practice	45 470	48 490	52 400	50 880	41

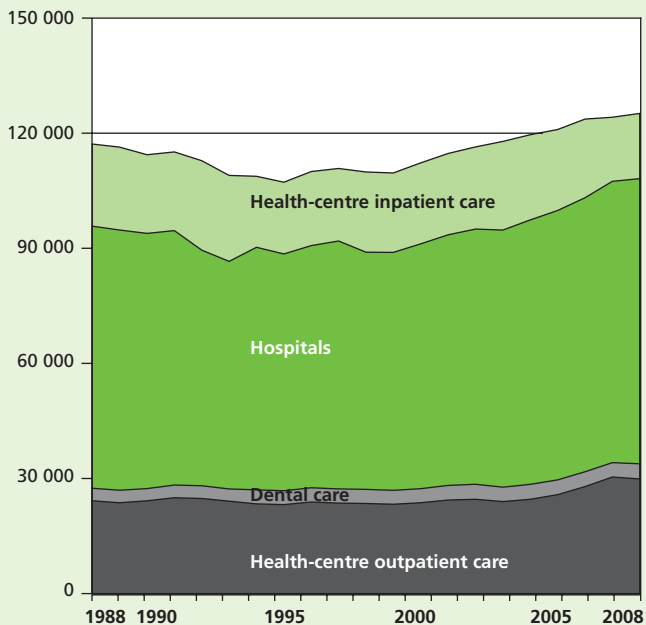
## Municipal employees by occupational group/10 000 inhabitants

Number of employees	1995	2000	2005	2008
Medical doctors	19.3	21.5	22.1	23.2
Dentists	4.3	4.4	4.5	4.4
Social workers	8.6	9.1	9.8	10.4
Social work instructors	8.6	10.9	13.1	15.2
Nurses	43.6	54.2	69.1	74.7
Practical nurses	42.5	46.9	64.3	77.4
Assistant nurses and hospital ward assistants	42.0	37.8	33.4	30.9
Home care assistants/over-75s	486	416	252	181
Pre-primary education teaching professionals	217	272	303	359
Children's nurses and kindergarten assistants /children aged 1–6	394	487	488	573
Family childminders/children aged 1–6	456	485	439	416

## Municipal employees in social care 1988–2008



## Municipal employees in health care, 1988–2008



# 10 Expenditure

**Social protection expenditure by function, current prices, EUR million <sup>31</sup>**

	1995	2000	2005	2007	2008
Sickness and health	6 144	7 637	10 528	11 683	12 654
Disability	4 394	4 467	5 262	5 570 <sup>b)</sup>	5 947 <sup>b)</sup>
Old age	8 480	10 233	13 697	15 451 <sup>b)</sup>	16 301 <sup>b)</sup>
Survivors	1 144	1 276	1 470	1 549	1 591
Family and children	3 920	4 007	4 705	5 101	5 414
Unemployment	4 220	3 372	3 770	3 430	3 346
Housing	441	467	437	431 <sup>b)</sup>	778 <sup>b)</sup>
Other	615	671	813	984	1 054
Administration	843	1 011	1 318	1 415	1 485
Total	30 200	33 142	42 001	45 615	48 572
% of GDP	31.5	25.1	26.7	25.4	26.3

**Financing of social protection expenditure, % <sup>31</sup>**

	1995	2000	2005	2007	2008
State	29.1	24.1	24.8	24.3	25.1
Municipalities	16.7	19.1	19.2	18.9	18.6
Employers	33.7	37.7	38.5	37.9	38.4
Insured persons	13.7	12.1	11.4	11.8	11.2
Other income	6.9	7.1	6.1	7.1	6.7
Total	100	100	100	100	100

**Per capita social expenditure in EU and Nordic countries using Purchasing Power Parity, EUR <sup>32</sup>**

	1995	2000	2005	2006	2007
Finland	4 967	5 598	6 866	7 118	7 321
Sweden	6 183	7 279	8 531	8 821	9 028
Norway	5 257	7 661	9 441	9 809	10 141
Denmark	6 158	7 235	8 407	8 510	8 630
Iceland	3 694	4 820	6 332	6 221	6 497
EU (15)	4 717	5 892	7 022	7 252	7 464

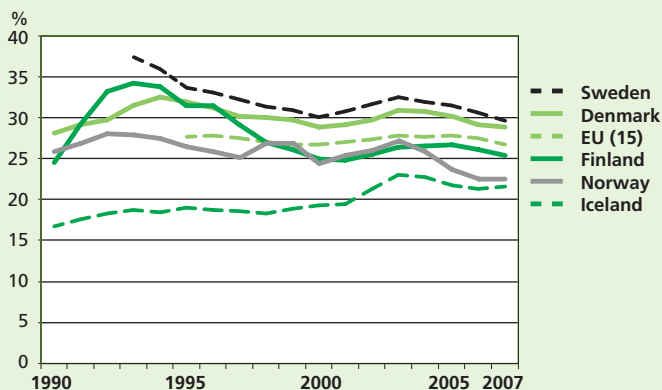
### Health expenditure by function, current prices, EUR million <sup>33</sup>

	1995	2000	2005	2007	2008
Specialised health care	2 470	3 055	4 324	4 855	5 064
Primary health care (excl. occupational, student and dental care)	1 465	1 735	2 380	2 651	2 844
Oral health care	438	559	771	897	975
Occupational and student health care	231	336	498	589	633
Institutional care for older people	481	543	693	749	768
Private health care reimbursed under the National Health Insurance	476	621	761	859	909
Other health care	161	169	220	226	247
Pharmaceuticals and other medical non-durables	956	1 408	2 061	2 073	2 232
Therapeutical appliances and other medical durables	205	264	345	392	394
Administration	226	265	348	382	371
Travels	100	133	187	221	241
Gross investment	346	466	691	848	774
<b>Total</b>	<b>7 554</b>	<b>9 554</b>	<b>13 278</b>	<b>14 739</b>	<b>15 453</b>
% of GDP	7.9	7.2	8.4	8.2	8.4

### Financing of health expenditure, % <sup>33</sup>

	1995	2000	2005	2007	2008
State	26.5	17.8	21.5	22.3	24.2
Municipalities	33.1	39.4	37.4	37.7	35.0
Social Insurance Institution	12.5	13.9	14.6	14.5	15.0
Relief funds	0.5	0.5	0.4	0.4	0.4
Private insurance	2.0	2.0	1.7	1.7	1.7
Households	21.8	22.3	20.1	19.0	19.4
Non-profit organisations serving households	1.5	1.5	1.5	1.5	1.4
Employers	2.2	2.6	2.8	2.9	2.8
<b>Total</b>	<b>100</b>	<b>100</b>	<b>100</b>	<b>100</b>	<b>100</b>

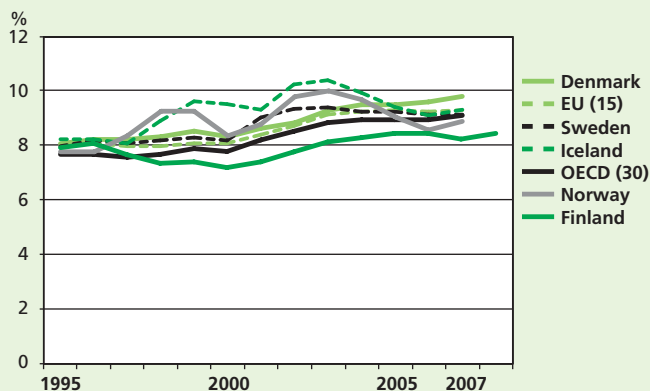
## Social expenditure as a share of GDP in EU and Nordic countries, 1990–2007, % <sup>32</sup>



## Per capita health expenditure in OECD countries using Purchasing Power Parity, USD <sup>34</sup>

	1995	2000	2004	2005	2006	2007
Finland	1 481	1 853	2 459	2 590	2 709	2 840
Sweden	1 745	2 283	2 950	2 958	3 124	3 323
Norway	1 862	3 039	4 079	4 301	4 507	4 763
Denmark	1 871	2 378	3 055	3 152	3 357	3 512
Iceland	1 909	2 736	3 335	3 304	3 207	3 319
EU (15)	1 655	2 133	2 842	2 958	3 102	3 274
OECD (30)	1 532	1 961	2 587	2 707	2 920	2 956

**Health care expenditure as a share of GDP in OECD countries,  
1995–2007, % <sup>34</sup>**



# Further information

**National Institute for Health and Welfare (THL)**  
[www.thl.fi](http://www.thl.fi)

**1 Population Statistics; Population; Population projection; Causes of death.** OSF. Statistics Finland

<http://www.stat.fi>

**2 Parturients, Deliveries and Births.** OSF. THL

**3 Helakorpi Satu, Paavola Meri, Prättälä Ritva, Uutela Antti.**

Health Behaviour and Health among the Finnish Adult Population, Spring 2008.

National Institute for Health and Welfare.

Report 2/2009

**4 Finances and Activities of Municipalities and Joint Municipal Boards.** OSF. Statistics Finland

[http://www.stat.fi/til/ktt/index\\_en.html](http://www.stat.fi/til/ktt/index_en.html)

**5 Child home care allowance and child allowance.** The Social Insurance Institution of Finland

[www.kela.fi](http://www.kela.fi)

**6 Child Welfare.** OSF. THL

**7.1 2008: Child Maintenance and Custody.** OSF. THL

**7.2 2009: Child Maintenance allowance.** The Social Insurance Institution of Finland

[www.fpa.fi](http://www.fpa.fi)

**8 Regular Home Care.** OSF. THL

**9 Institutional Care and Housing Services in Social Care.** OSF. THL

**10 Inpatient Health Care.** OSF. THL

**11 Alcoholic beverage Consumption.** SVT. THL; Valvira (National Supervisory Authority for Welfare and Health

[www.valvira.fi](http://www.valvira.fi)

**12 Alcoholic Beverage Price Index.** OSF. THL

[www.stakes.fi/tilastot/alkoholitilanne](http://www.stakes.fi/tilastot/alkoholitilanne)

**13 Adolescent Health and Lifestyle Survey.** Tampere university

[www.uta.fi/laitokset/tsph/tutkimus/kansanterveystiede/nttt.php](http://www.uta.fi/laitokset/tsph/tutkimus/kansanterveystiede/nttt.php)

**14 Drinking Habits Survey. 1992 and 2006.** STAKES

**15 Alcohol and Drug Studies.** STAKES

**16 ESPAD-the European School Survey Project on Alcohol and Other Drugs.** THL

<http://www.espad.org/>

**17 The European Monitoring Centre for Drugs and Drug Addiction (EMCDDA)**

<http://www.emcdda.europa.eu>

**18 Kontula, O. & Koskela, K. (1992).** Huumeiden käyttö ja mielipiteet huumeista. Helsinki

19 Partanen P. ym. (2007)  
Yhteiskuntapolitiikka 72 (5), 553–561.

20 A-Clinic Foundation  
[www.a-klinikka.fi](http://www.a-klinikka.fi)

21 Drug Clients in Services for  
Substance Abusers 2008. THL

22 Costs of Alcohol and Drug Harm.  
2009. THL

23 Survey of Substance Abuse cases in  
Health and Social Services 1999, 2003  
and 2007. THL

24 Health-Centre Outpatient Care.  
OSF. THL

25 Outpatient Specialised Health Care.  
OSF. THL

26 Induced Abortions. OSF. THL

27 Sterilisations. OSF. THL

28 Private Social Care Provision. OSF.  
THL

29 Private Health Care Provision. OSF.  
THL

30 Social Assistance. OSF. THL

31 Social Protection Expenditure. OSF.  
THL

32 Eurostat, Dissemination databasen  
2007  
<http://ec.europa.eu/eurostat>

33 Health Expenditure and Financing.  
OSF. THL

34 OECD Health Data, June 2009  
[www.oecd.org](http://www.oecd.org)

### Explanation of symbols:

- (-) Magnitude nil
- (..) Data unavailable or too uncertain  
for presentation
- (.) Data too inconsistent for  
presentation
- (b) Break in series
- (e) Projection
- (\*) Preliminary data



## New statistical publications from the National Institute for Health and Welfare

- Statistical Yearbook on Social Welfare and Health Care 2009, OSF, Social Protection 2009, EUR 33
- Yearbook of Alcohol and Drug Statistics 2009, OSF, Social Protection 2009.  
Online publication  
<http://www.stakes.fi/tilastot/tilastotiedotteet/2009/paihde/Paihdetilastollinen2009.pdf>



NATIONAL INSTITUTE  
FOR HEALTH AND WELFARE

PL 30 (Mannerheimintie 166)  
00271 Helsinki  
Phone: 020 610 6000

ISBN 978-952-245-341-9 (printed)  
ISBN 978-952-245-342-6 (pdf)

Layout: Tiina Kuoppala | Printer: Kopijyvä Oy, Jyväskylä 2010